



# Simple. Fast. Precise. Empowering Rheumatology.

NextGen LOGIQ™ *e* Ultrasound System



## Challenges in Rheumatology

Early diagnosis, objective treatment decisions and monitoring a patient's treatment are everyday challenges. When rheumatologists met with GE scientists, they asked for ease of use tools to quantify low blood flow and help improve repeatability of follow up exams.

### Designed for Rheumatology

Detect slow flow. Quantify it. Repeat with consistency. Those were the values users requested that drove the creation of the NextGen LOGIQ e. Its imaging engine comes from GE's flagship console systems, delivering crisp images. Powered by the Windows 10 platform for enhanced cybersecurity, this system delivers innovative image fusion and quantification to help bring objectivity to patient evaluation, enabling you to monitor progress in a technically consistent way as you treat to the target of remission.

### Simple

The LOGIQ e gives you many advanced features and its right-out-of-the-box imaging – optimized to help detect inflammation helps make the technology transparent so that you can focus on the patient.

- **Measure the inflammation.** PDI provides objective quantitative measures of blood flow that is associated with tumors and inflammatory conditions such as synovitis.
- **Simple consistency.** The Patient Follow-up Tool with Fusion helps ensure technical consistency from exam-to-exam to help clinical conclusions not be clouded by inconsistent technique.

### Fast

Whether you're trying to get through an over-booked day, or you're measuring productivity for business reasons, the LOGIQ e was built to help make you fast.

- **Need a third hand?** With a needle in one hand and a probe in the other, sometimes you need another person to adjust the image. With system controls on the probe you may not need the extra hand.
- **Imaging to go.** Portable and battery-operated, the LOGIQ e allows flexibility in moving from room-to-room.



Button probe

### Precise

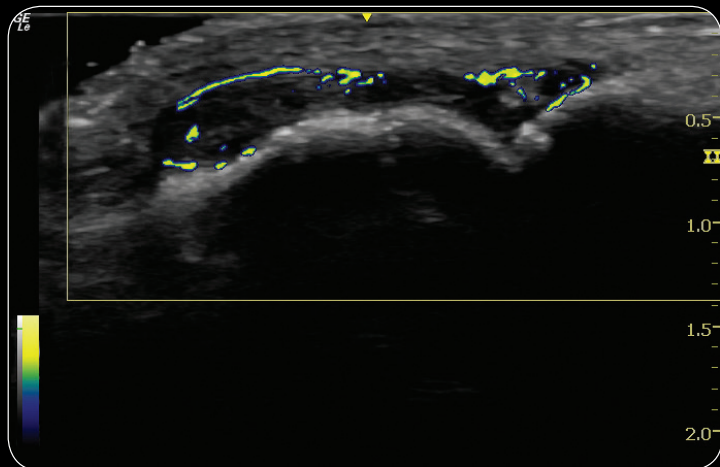
Crisp imaging and quantification are essential to measuring the response of therapy. To help visualize that response, the LOGIQ e delivers consistently crisp images.

- **See blood flow in microvessels.** High-Res PDI, a GE proprietary feature for visualizing can see flow in vessels that are two times smaller than with conventional PDI<sup>1</sup>.
- **Image almost the whole body... and almost any body.** For demanding superficial imaging, pick up the new 22 MHz linear probe. Image deep in the hip with the 1-5 MHz curved transducer, and explore hard-to-reach areas with the high frequency Hockey Stick.

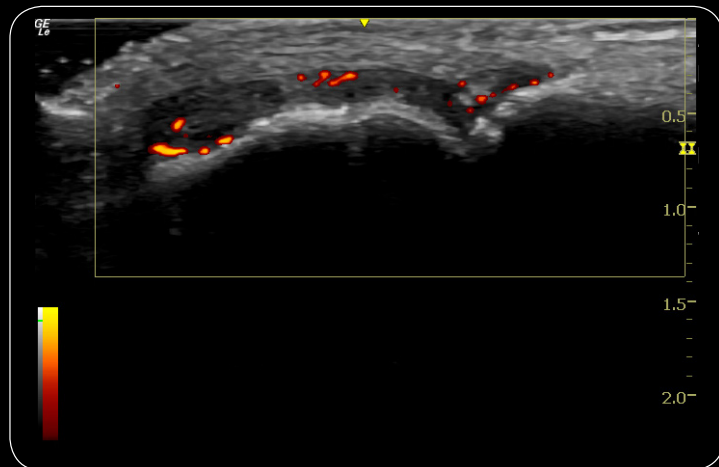


Ultra-high frequency 10-22 MHz linear transducer

<sup>1</sup>As compared to GE's Power Doppler Imaging, High-Res PDI has twice the axial resolution on the NextGen LOGIQ e when using a L8-18i-RS transducer with a phantom.



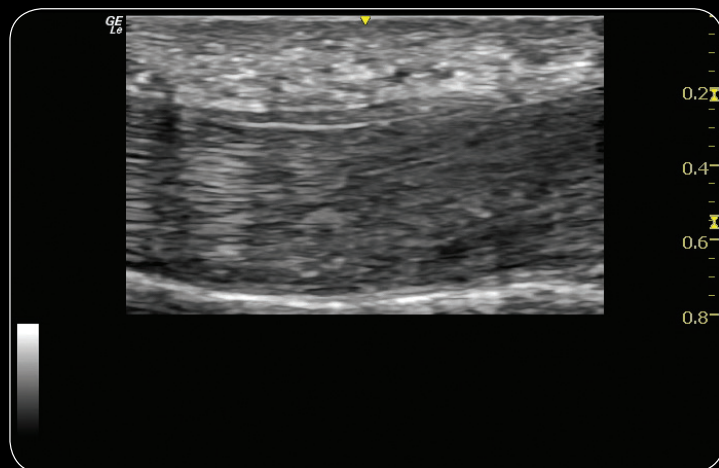
Axial resolution of the High-Res PDI neovascularization is remarkable using the L4-12t-RS



Resolution of PDI is exceptional in small vascularization of the DIP joint utilizing the L4-12t-RS

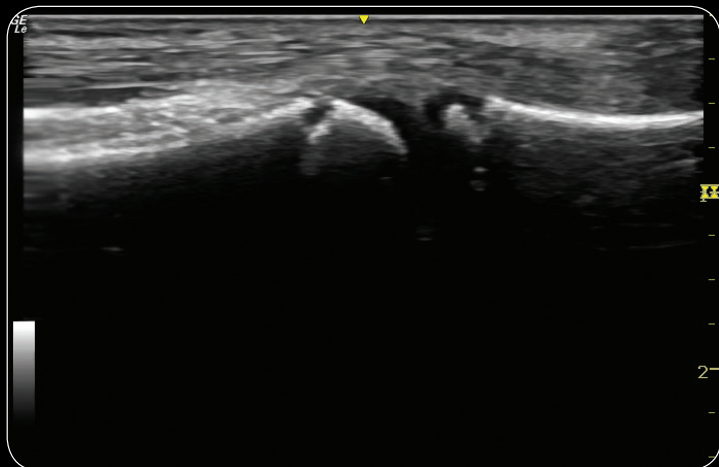


Definition of the tendon is remarkable using PDI to visualize vascularization utilizing the L4-12t-RS

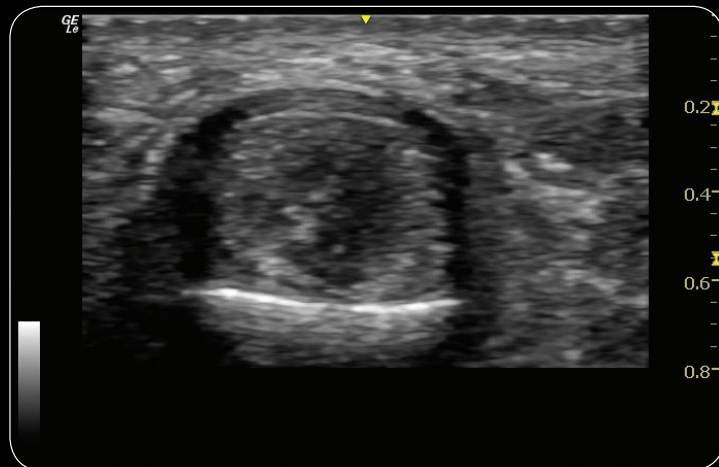


Excellent clarity of the individual fibers within the tendon sheath at 22MHz using the L10-22-RS

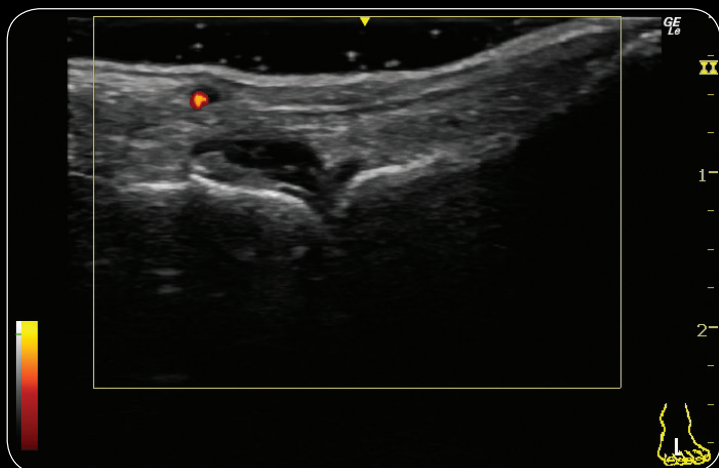




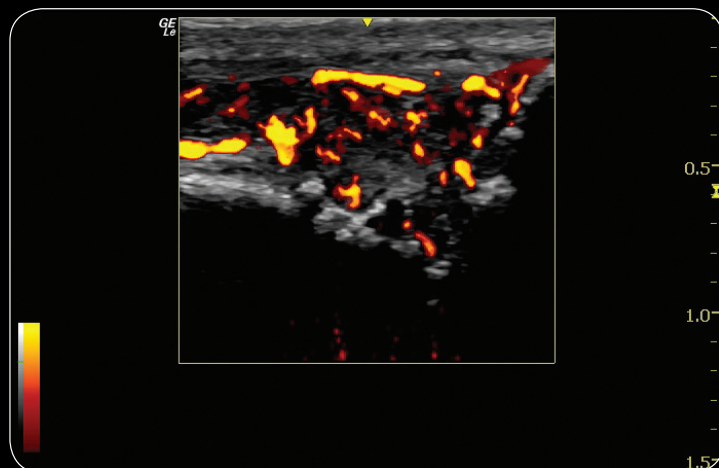
Clarity of the bony detail of the PIP joint shows excellent spatial resolution delivered by the L4-12t-RS



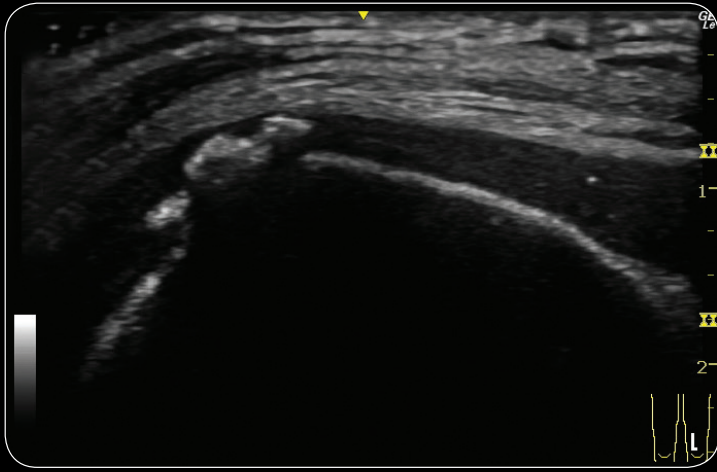
The tissue differentiation of the anatomy surrounding the flexor tendon is clearly notable using the L10-22-RS



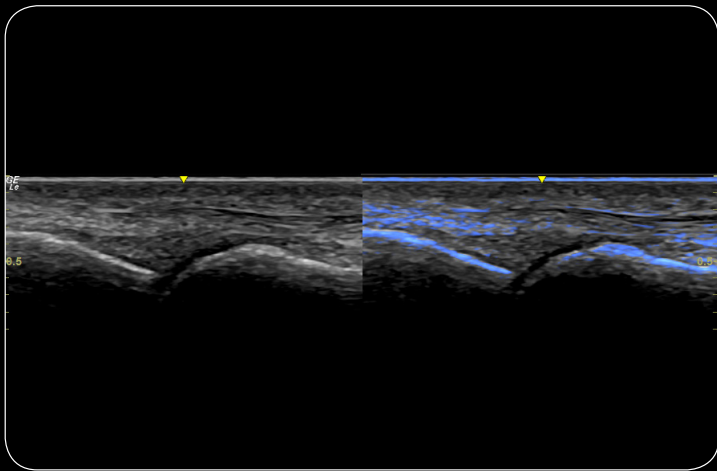
Delineation of the MTP joint is remarkable using PDI to visualize vascularization utilizing the L4-12t-RS



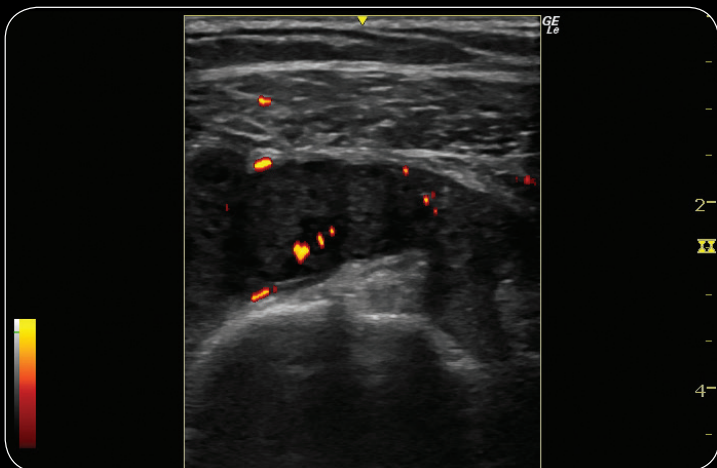
Outstanding resolution of the PDI neovascularization is significant using the L10-22-RS



Observing the excellent contrast resolution between bone and soft tissue is remarkable seen delivered by the L4-12t-RS



Accurate comparison in musculoskeletal imaging has been enhanced with the addition of Fusion to the daily workflow



Superficial to deep imaging is accessible with the L4-12t-RS for Rheumatology



Portable Docking Cart



Wide Range of Transducers

## About GE Healthcare

GE Healthcare provides transformational medical technologies and services to meet the demand for increased access, enhanced quality and more affordable healthcare around the world. GE (NYSE: GE) works on things that matter - great people and technologies taking on tough challenges. From medical imaging, software & IT, patient monitoring and diagnostics to drug discovery, biopharmaceutical manufacturing technologies and performance improvement solutions, GE Healthcare helps medical professionals deliver great healthcare to their patients.

GE Healthcare  
9900 Innovation Drive  
Wauwatosa, WI 53226  
U.S.A.

[www.gehealthcare.com](http://www.gehealthcare.com)



Data subject to change.

©2019 General Electric Company. December, 2019/JB44959(1)

Not all features or specifications described in this document may be available in all probes and/or modes.

All probes names include the -RS in the name to identify the connector.

GE, GE Monogram and LOGIQ are trademarks of General Electric Company.

GE Medical Systems Ultrasound & Primary Care Diagnostics, LLC, a General Electric Company, doing business as GE Healthcare.

NextGen LOGIQ *e* is a configuration of LOGIQ *e*.

Reproduction in any form is forbidden without prior written permission from GE. Nothing in this material should be used to diagnose or treat any disease or condition. Readers must consult a healthcare professional.