



Simple. Fast. Precise. Empowering Musculoskeletal Medicine.

NextGen LOGIQ™ *e* Ultrasound System



Challenges in musculoskeletal medicine.

Sometimes it's hard to connect the patient's complaint to the specific cause of their pain. That's what MSK specialists told GE scientists. Specifically, they asked for tools to help them get to confident diagnoses quickly and new tools to help guide interventions with precision, almost anywhere in the body.

Designed for musculoskeletal ultrasound

See clearly. See quickly. Guide precisely. Those were the values users requested that drove the creation of the NextGen LOGIQ *e*. Its imaging engine comes from GE's flagship console system delivering crisp imaging in a portable package with enhanced cybersecurity from Windows® 10. Innovative musculoskeletal-specific transducers and software help to see the source of pain, guide treatments, and monitor patient progress.

Simple

The LOGIQ *e* gives you many advanced features and its right-out-of-the-box imaging – optimized for musculoskeletal – makes the technology transparent so that you can focus on the patient.

- **Simple consistency.** Patient Follow-up Tool with Fusion helps ensure technical consistency from exam-to-exam to help clinical conclusions not be clouded by inconsistent technique.
- **Simple comparison.** Sometimes comparing left-to-right or before-and-after is the key to clinical decision making. Simultaneous Split Screen makes the comparison nearly automatic.
- **The simplicity of a number.** PDI quantification provides a numeric representation of the blood flow which may be associated with inflammation, tumors, and synovitis.¹

Fast

Whether you're measuring seconds for clinical reasons, or you're measuring productivity for business reasons, the LOGIQ *e* was built to help make you fast.

- **Need a third hand?** With a needle in one hand, a probe in the other, sometimes you need another person to adjust the image. With system controls on the probe, you may not need the extra hand.
- **Imaging on the go.** Compact and battery-operated, the LOGIQ *e* allows flexibility in moving from patient to patient.

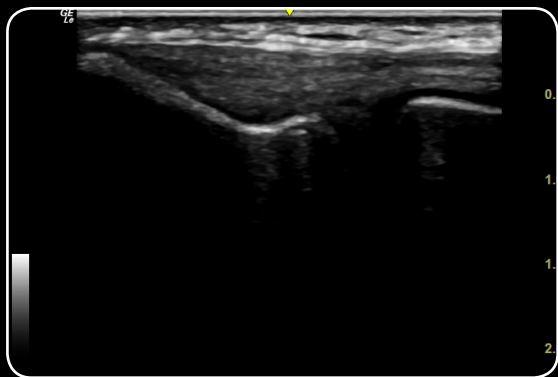


Precise

Helping to see the origin of pain – bony or soft, shoulder or finger, obese or frail, superficial or deep – is fundamental. Precise imaging is at the core of the LOGIQ *e*.

- **Image almost the whole body... and almost any body.** The 1-5MHz curved transducer is versatile for applications from the shoulder to the hip, even in the obese patient. Other transducers image up to 22 MHz for stunning superficial detail.
- **See the inflammation and early disease.** High-Res PDI is a GE exclusive technology to visualize flow in neovascularization.
- **See the needle tip.** The LOGIQ *e* uses two different types of ultrasound: One for tissue and one for metal. This helps the needle stand out and allows separate control of the needle appearance.
- **See in 3D.** Use any transducer¹ to show anatomical relationships intuitively with advanced Easy3D.

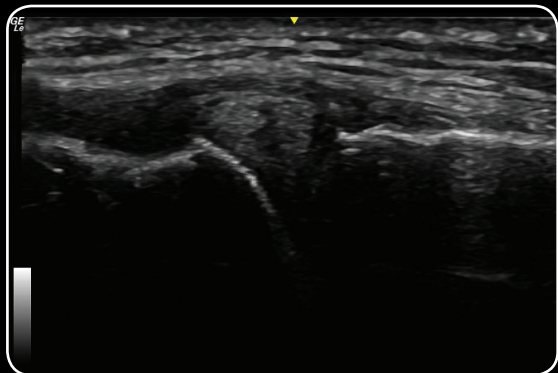
¹"Any transducer" applies to all transducers that have been validated on the NextGen LOGIQ *e*.



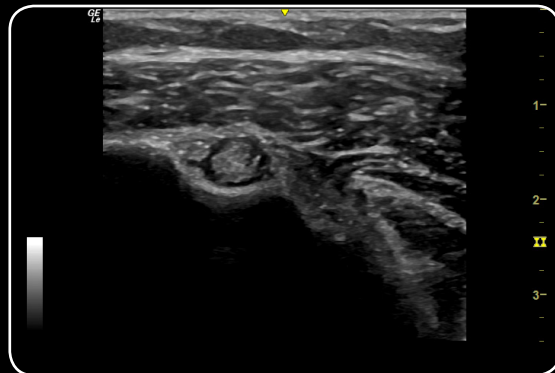
Outstanding clarity of the elbow extensor tendon using the L8-18i-RS for superficial imaging



Exceptional detail seen in the length of the Achilles tendon using LOGIQ View



Excellent tissue differentiation of the lateral meniscus is seen using the L4-12t-RS



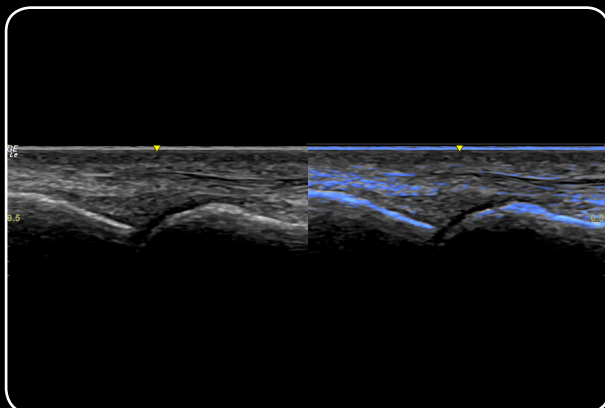
Outstanding resolution demonstrating fluid around the biceps tendon using the 12L-RS



Exceptional detail demonstrating an abnormality of the supraspinatus tendon and bony contour delivered with the 12L-RS



Clarity of an intact flexor pulley is seen with precise detail using the L10-22-RS



Accurate comparison in musculoskeletal imaging has been taken to the next level with the addition of Fusion to the daily workflow

About GE Healthcare

GE Healthcare provides transformational medical technologies and services to meet the demand for increased access, enhanced quality and more affordable healthcare around the world. GE (NYSE: GE) works on things that matter - great people and technologies taking on tough challenges. From medical imaging, software & IT, patient monitoring and diagnostics to drug discovery, biopharmaceutical manufacturing technologies and performance improvement solutions, GE Healthcare helps medical professionals deliver great healthcare to their patients.

GE Healthcare
9900 Innovation Drive
Wauwatosa, WI 53226
U.S.A.

www.gehealthcare.com

Data subject to change.

©2019 General Electric Company. December, 2019/JB44958XX(1)

Not all features or specifications described in this document may be available in all probes and/or modes.

All probes names include the -RS in the name to identify the connector.

GE Medical Systems Ultrasound & Primary Care Diagnostics, LLC, a General Electric Company, doing business as GE Healthcare.

GE, GE Monogram and LOGIQ are trademarks of General Electric Company or one of its subsidiaries.

NextGen LOGIQ *e* is a configuration of LOGIQ *e*.

Reproduction in any form is forbidden without prior written permission from GE. Nothing in this material should be used to diagnose or treat any disease or condition. Readers must consult a healthcare professional.

