



Simple. Fast. Precise.

Empowering Anesthesiology.

NextGen LOGIQ™ *e* Ultrasound System



Challenges in Anesthesiology

A fast and accurate regional block requires seeing the nerve fast and then accurate needle guidance. That's what anesthesiologists told GE scientists. Even more, they asked for help to see the needle tip, perform procedures quickly, and be confident that the injection was administered in the correct location... even in obese patients.

Designed for Anesthesiology

See clearly. See quickly. Guide precisely. Those were the values that users requested that drove the creation of the NextGen LOGIQ *e*. With enhanced cybersecurity measures from the Windows[®] 10 operating platform, its imaging engine comes from GE's flagship console system, delivering crisp images in a compact package. Innovative anesthesia-specific software and transducers help you see the needle and administer a block...even in a brightly lit room.



Button probe

Simple

The LOGIQ *e* gives you many advanced features and the right-out-of-the-box imaging – optimized for anesthesia helps make the technology transparent so that you can focus on the patient.

- **Set up for you.** Head to toe, every block is different. The LOGIQ *e*'s presets help; simplify the selection of the right system settings for each application.
- **Workhorse simplicity:** The versatility of probes like the 12L-RS mean you can use a single probe for many applications.
- **Simple documentation.** One click sends images to multiple storage locations.

Fast

Whether you're measuring seconds for clinical reasons, or you're measuring productivity for business reasons, the LOGIQ *e* is built to help make you fast. The compact system quickly moves from patient to patient.

- **Need a third hand?** With a needle in one hand, a probe in the other, sometimes you need another person to adjust the image. With system controls on the probe, you may not need the extra hand.
- **Imaging on the go.** Compact and battery-operated, the LOGIQ *e* takes the hassle out of moving from patient to patient.

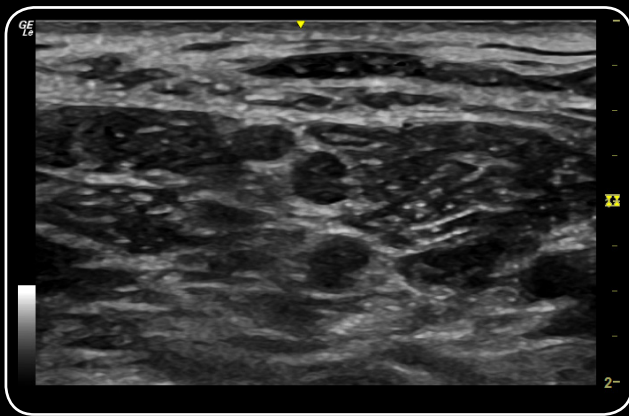
Precise

Getting the needle in the right place the first time on all patient types is key to patient comfort. Crisp imaging is at the core of the LOGIQ *e*.

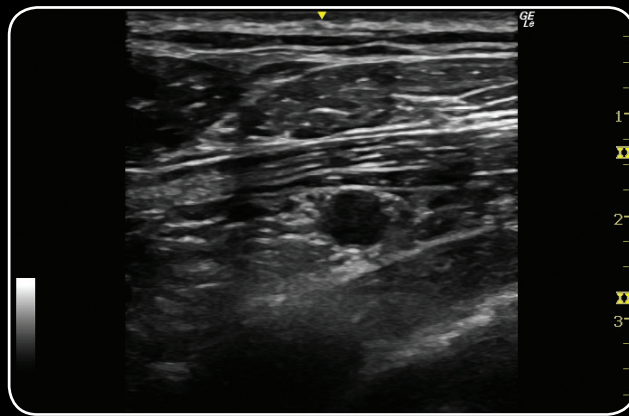
- **See the needle tip.** The LOGIQ *e* uses two different types of ultrasound: One for tissue and one for metal. This makes the needle stand out and allows separate control of its appearance.
- **See the nerve.** Tissue differentiation matters. The LOGIQ *e*'s imaging engine is optimized to help make the nerve stand out.



NextGen LOGIQ *e*



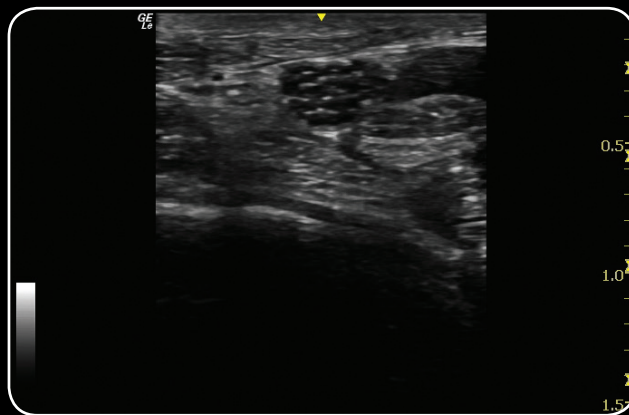
Brachial plexus nerve is clearly visualized between the scalene muscles using the L4-12t-RS



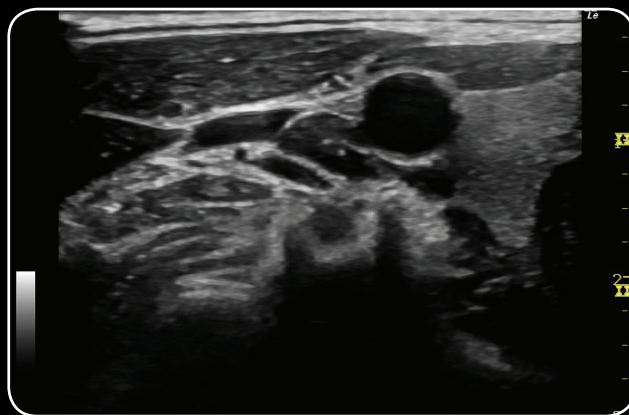
Infraclavicular brachial plexus is well seen surrounding the axillary artery between the two fascial planes imaged on the L4-12t-RS



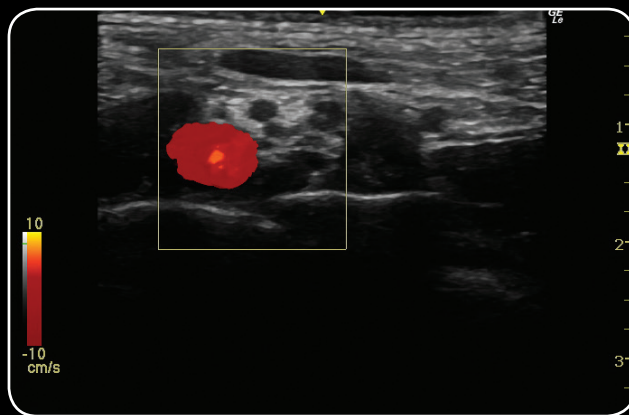
Clarity of the median nerve at the mid-forearm shows excellent spatial resolution using the L10-22-RS



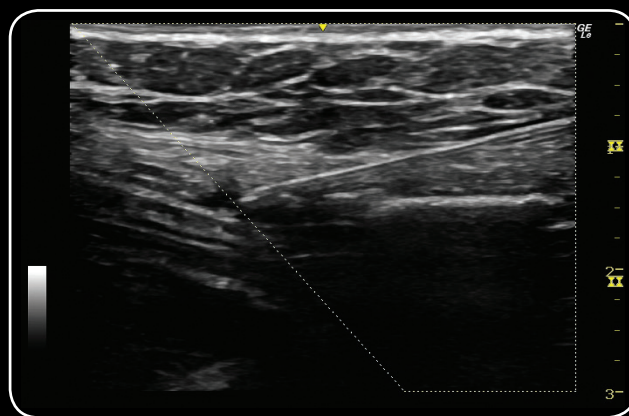
Clearly delineate the individual fascials of nerve bundles using the high resolution of the L10-22-RS



Visualization of the phrenic nerve is clearly defined using the L4-12t-RS



The supraclavicular brachial plexus nerve is easily confirmed while applying power Doppler with the L4-12t-RS



Needle and needle tip are clearly demonstrated approaching the transverse abdominus muscle for TAP block procedure



Portable Docking Cart



Wide Range of Probes

Data subject to change.

©2020 General Electric Company. November, 2020/JB44960XX(1)

Not all features or specifications described in this document may be available in all probes and/or modes.

GE, GE Monogram and LOGIQ are trademarks of General Electric Company.

GE Medical Systems Ultrasound & Primary Care Diagnostics, LLC, a General Electric Company, doing business as GE Healthcare.

NextGen LOGIQ *e* is a configuration of LOGIQ *e*.

Reproduction in any form is forbidden without prior written permission from GE. Nothing in this material should be used to diagnose or treat any disease or condition. Readers must consult a healthcare professional.

GE Healthcare
9900 Innovation Drive
Wauwatosa, WI 53226
U.S.A.

www.gehealthcare.com

