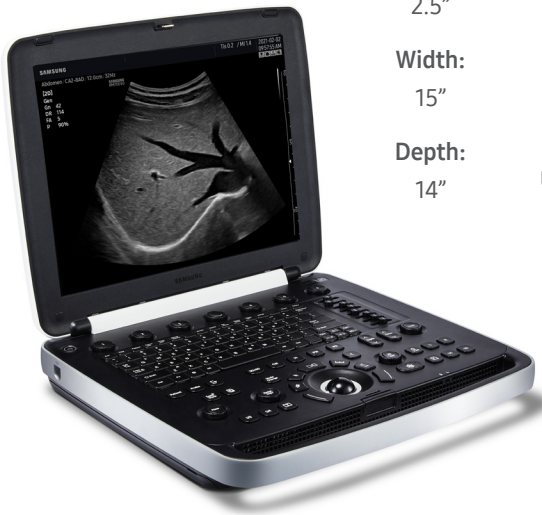


# HM70 EVO (v1.01)

## TECHNICAL SPECIFICATIONS



<b>Height:</b>	<b>Weight:</b>
2.5"	13.23 lbs
<b>Width:</b>	<b>Battery Life:</b>
15"	75 minutes
<b>Depth:</b>	<b>Full Bootup:</b>
14"	Up to 150 seconds
	<b>Sleep Mode:</b>
	Up to 60 seconds

### FEATURES

#### Imaging Modes and Standard Features

2D, Color Doppler, Power Doppler, S-Flow, M-Mode, Pulsed Wave, TDI, TDW, Full Screen Mode™, BiometryAssist™, QuickScan™, ClearVision™, MultiVision™, HQ-Vision™, Full Spectrum Imaging, Multi-frequency, Trapezoid, S-Harmonic Imaging, DICOM 3.0 Pulse Inversion Harmonics, Barcode Scanner, Beam Steering (Linear), ADVR™

#### Advanced Imaging Modes and Optional Features

3D/4D, RealisticVue(Lite)™, 3DXI, XI STIC, 2D & 5D Follicle™, 2D NT™, LaborAssist™, CW, ECG, NeedleMate+™, EzExam+™, Cardiac Measurements, Wireless Connectivity, AutoIMT+™, Panoramic+, ElastoScan™, E-Strain™, Strain+, Stress Echo, Cart with 3 ports, Foot Switch, Extended Power Pack, Mobile Export

### APPLICATIONS

Abdominal, Obstetrics, Gynecology, Urology, Vascular, TCD, Cardiac, Small Parts, MSK, Breast, and Pediatrics

### SYSTEM OVERVIEW

Component	Description
Monitor	15" LCD Monitor with LED Backlit Laptop Style
Image Storage	Integrated 256 GB SSD
Depth Range	2 - 38 cm depending on the probes
USB 2.0 or 3.0	4 Ports with cart
Input/Output Connections	HDMI port, Ethernet Port
DICOM	Storage, Worklist, SR, PPS, SC, Print
Cybersecurity	Windows 10 User Management Windows Defender Antivirus EMR/DICOM Secure Transmission (DICOM TLS) SSD Encryption BitLocker Audit Trails Password Control
Electrical	100 - 240 V AC, 3.5 A, 50-60 Hz

### ERGONOMICS

- Slim, laptop size with 1 mini-DLP connector and 1 pencil probe connector (optional)
- Backlit Keyboard and Control Panel
- Integrated Speakers
- Interactive Dynamic Software Menu
- Adjustable Brightness
- Optional Cart Specifications:
  - 3 Probe Ports & 4 Probe Holders
  - Printer Storage, Table & Supply Tray
  - Height: 32.4" x 39.5"
  - Width: 21.6"
  - Depth: 21"
  - Weight: 55.1 lbs

### TRANSDUCERS

Category	Description
Convex Array	CA1-7AD, CA2-8AD, CA4-10M
Endo-Cavity	EVN4-9
Linear Array	LA2-9S, LA3-16AD, LN5-12
Phased Array	PA1-5, PN2-4, SP3-8
Specialty	MMPT3-7, DP2B
Volume	VN4-8, EV2-10A

The technical specification is a general summary of available product features. The final product may vary subject to user preference and options.