



Apogee 2300
Exclusive for Cardiology

SIUI

HEADQUARTERS:

Shantou Institute of Ultrasonic Instruments Co., Ltd.
Add: No.77, Jinsha Road, Shantou 515041 Guangdong, China
Tel: 86-754-8825 0150 Fax: 86-754-8825 1499
<http://www.siui.com> E-mail: siui@siui.com

HONG KONG OFFICE:

Shantou Institute of Ultrasonic Instruments (HK) Co., Ltd.
Add: Room 2101, Tung Chiu Commercial Center 193 Lockhart Road, HK
Tel: 852-2891 6722 Fax: 852-2891 6723



SIUI



SIUI Healthcare

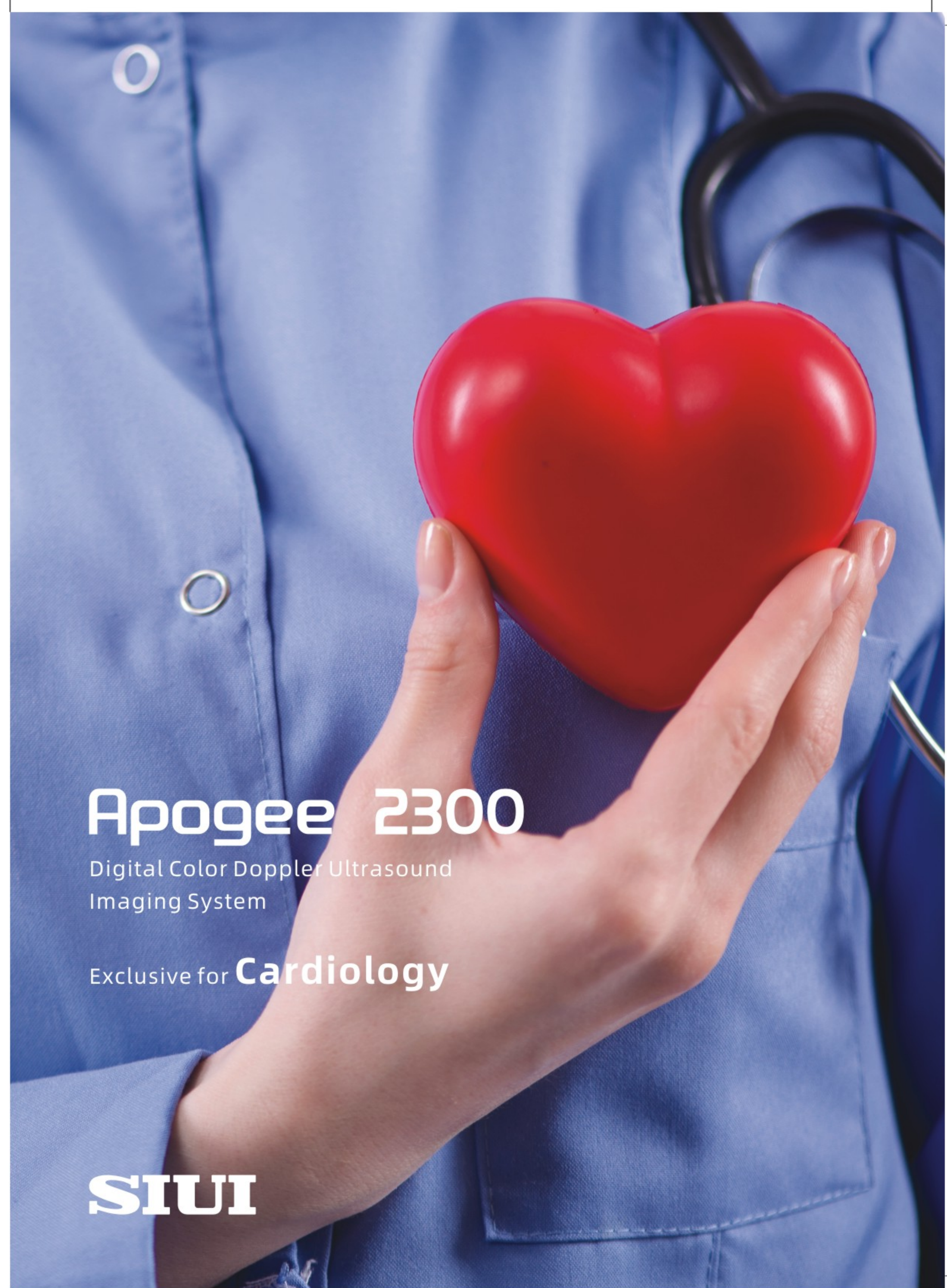


SIUI1978



SIUI1978

All rights reserved to SIUI 2021
Apogee 2300 Cardiology EN10210616



Apogee 2300

Digital Color Doppler Ultrasound
Imaging System

Exclusive for **Cardiology**

SIUI



Apogee 2300

Exclusive for Cardiology

Configured with all-round cardiac functions, Apogee 2300 enables professional operation to elevate diagnostic confidence.

- 15-inch screen, 35° tilting angle
- 2-probe connector
- Removable lithium ion battery
- Height adjustable trolley



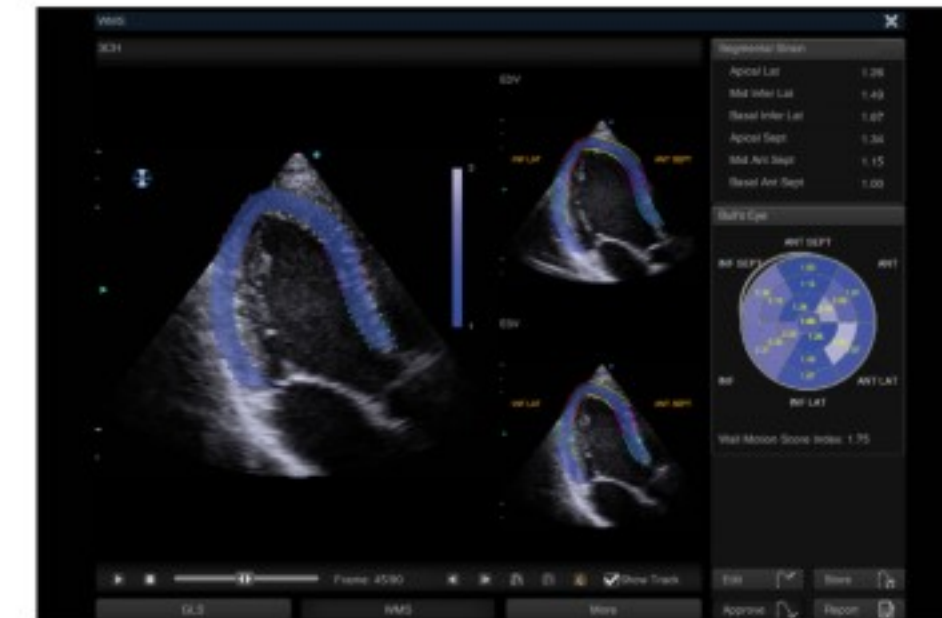
Phase array probe for adult



Phase array probe for children

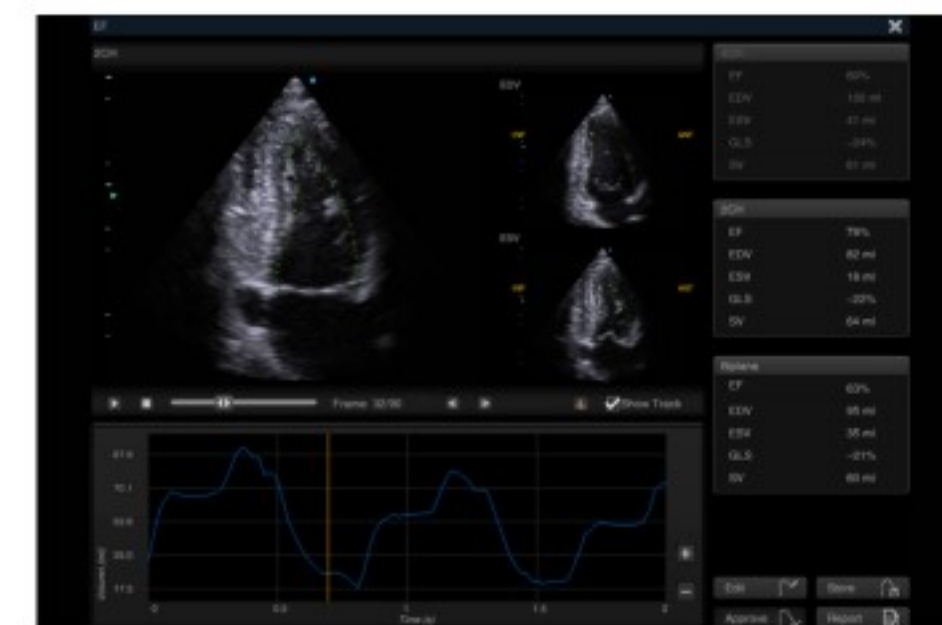
Auto SG

Global and regional myocardial function can be evaluated by this automatic quantitative assessment tool.



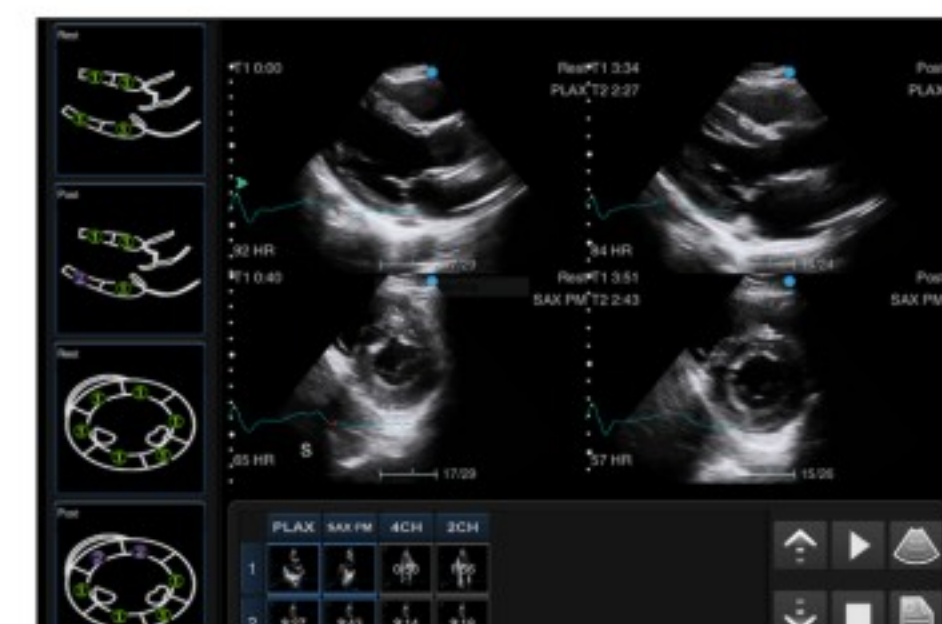
Auto EF

2D EF and volumes can be acquired automatically with LV EF, ESV EDV and GLS calculated simultaneously.

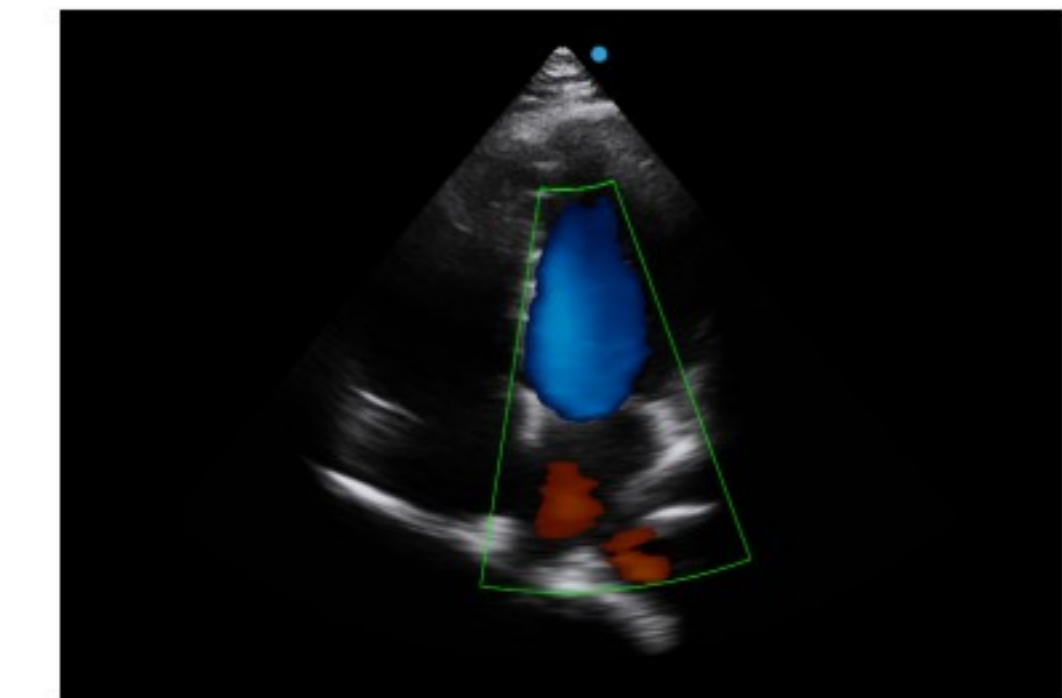


Stress Echo

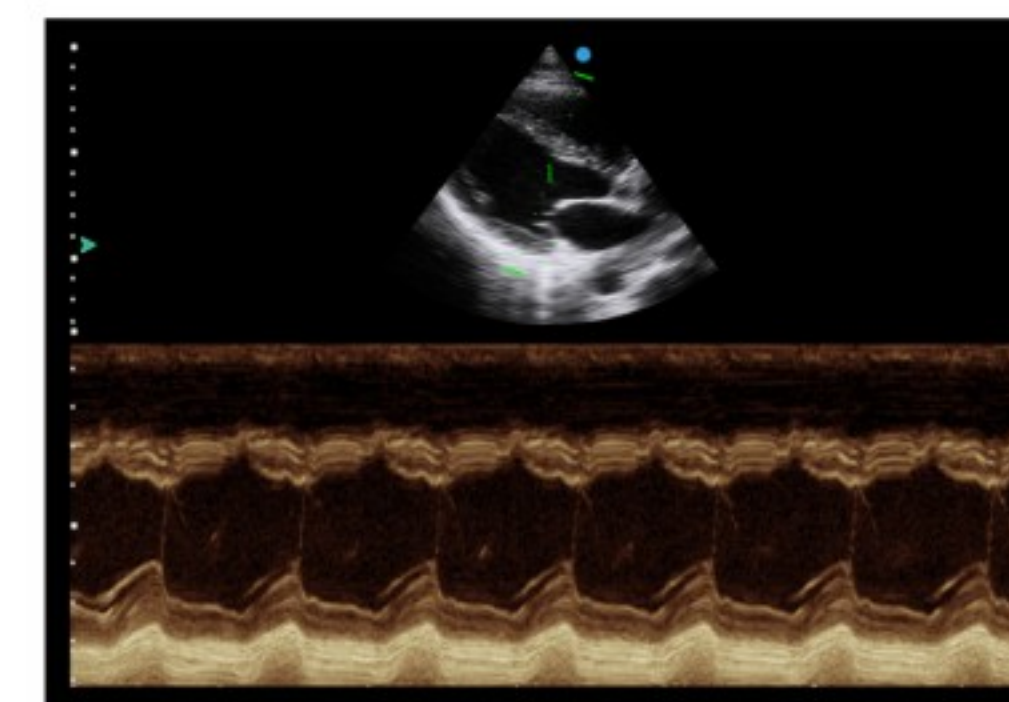
With ECG module, Stress Echo acquires cardiac images and assesses wall motion at rest and stress to detect coronary artery abnormality.



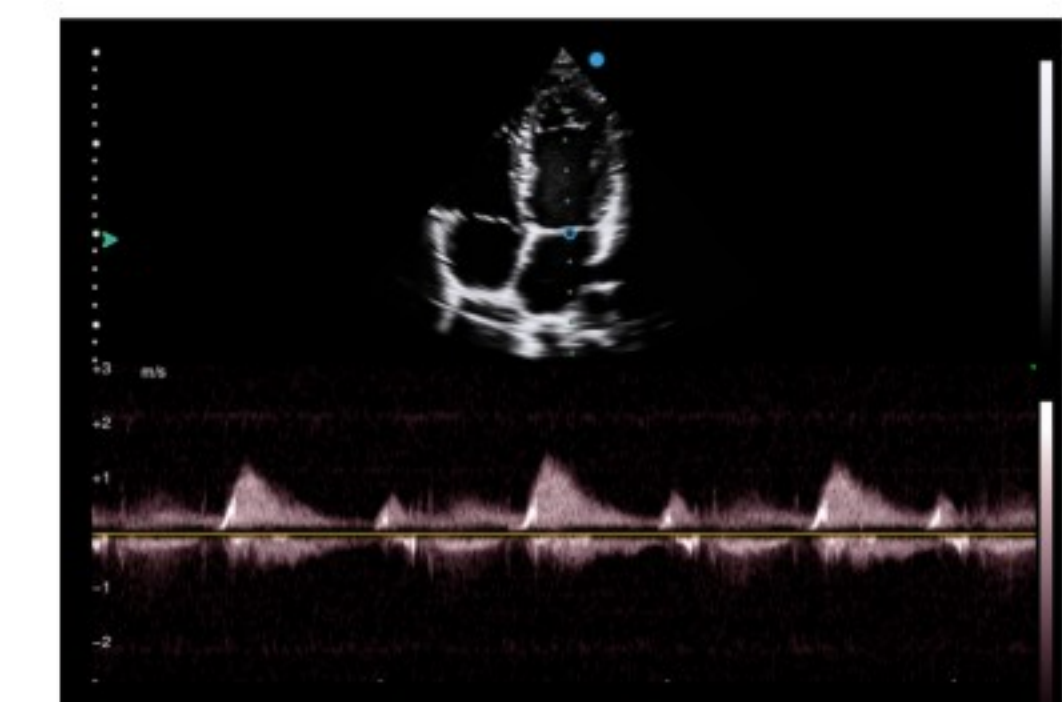
BW



CFM



AMM



CW

