



# Venue Go™ Ultrasound System

Made for Your Point of Care



*Simple. Fast. Precise.*

# For Your Point of Care

Created for your point-of-care, the Venue Go™ ultrasound was designed for your needs and adapts for your challenges. Its flexible design allows you to go from cart to table to boom with ease, providing your department with needed adaptability. AI-enabled tools help enable fast assessments, simplify the complex and support your life-saving decisions. Built with a small footprint and increased portability, Venue Go provides the flexibility you need to scan, diagnose and treat with ease and accuracy across a wide range of environments and care areas.



EXPLORE ALL AVAILABLE TRANSDUCERS



## Easy to reach probes

Smart cable management puts probes safely up top and cables out of the way and off the floor



## Long-lasting power

Batteries can provide scan times of up to two hours



## Built for durability

A 15.6-inch screen durable enough to withstand bumps, bangs and splashes



## Easy to clean

Smooth and seamless surface supports infection control efforts



## Our most robust system

A fully featured, multi-purpose ultrasound system made for your Point of Care



## At your side

Unit detaches from adjustable cart and allows for use on table top or standard VESA® connection



## Reliable support

Venue Go is backed by a multi-year warranty<sup>6</sup>

# Designed to simplify the complex

Venue Go ultrasound systems are built specifically for Point of Care medicine across the facility. They are streamlined to help users of different departments and experience levels confidently conduct patient exams.

## AI-enabled tools support your confident decision-making

AI-resources based on synthesized data and proprietary algorithms simplify manual processes such as measuring and finding B-lines, helping ensure consistency from user to user.

## Documentation tools streamline exams

Protocol management and easy documentation tools help users conquer busywork by readily providing the information they need, reducing the need to manually type findings.

## Broad probe portfolio for exceptional image quality

Venue Go features a wide variety of linear, curved, and cardiac transducers that are designed for a multitude of specialties and interchangeable\* across systems.

## A common platform ensures a consistent experience

All systems are built on one platform with the same interface to ensure familiarity and simplify training across your facility.

## Built-in teaching assistance facilitates learning

**Scribble** assists training with a touch-operated pointer and free-drawing capabilities that can also be visible on an external monitor or shared screen. The **MSK Tool Kit** provides reference images to make documentation easy and guides novice users in scanning the correct anatomy.

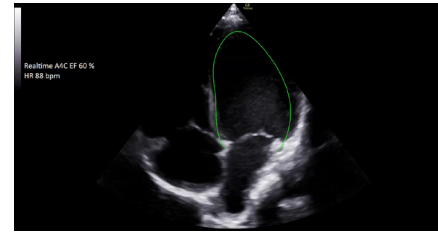
## Touch, pinch, swipe

No buttons. No knobs. A familiar touch screen with a simple, clear and intuitive interface works even with gloves or screen covers.



# Work smarter not harder with AI-proven tools

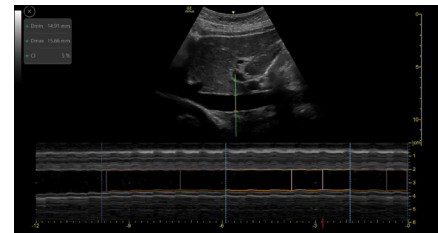
Venue Go has been designed and tested to be walk up easy for novice to expert users, and it features a number of AI-enabled automated tools to accelerate clinical workflow while also reducing the fatigue of repeated and difficult tasks. Utilizing proprietary algorithms, we synthesize data from numerous patients to ensure accurate calculations for clinical confidence.



## Real-time EF

Enables continuous calculation of real-time ejection fraction without having to conduct an ECG.

**Capture instant, precise results – within +/- 10 points of experts in 86% of cases.<sup>1</sup>**



## Shock toolkit

Facilitates shock evaluation by focusing on key organs linked to patient status: the heart, lungs, and inferior vena cava.

Associated rapid assessments:



## Auto IVC

Measure IVC collapsibility or distensibility accurately and automatically.

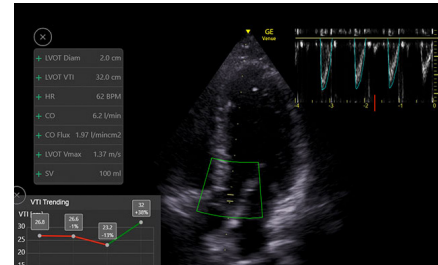
**Equivalent to an expert user's ability 87% of the time.<sup>2</sup>**



## Auto VTI

The VTI trending function helps clinicians quickly visualize the trend so the next course of action can be determined.

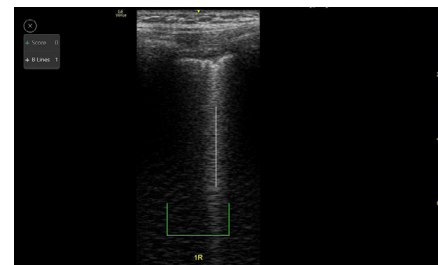
**Experience up to 82% time savings.<sup>3</sup>**



## Auto B-Lines

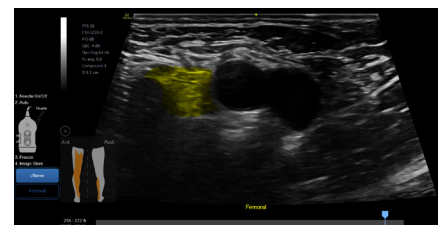
Calculate overall lung score in one step. You can also use it with Lung Sweep to highlight B-lines and display the frame with the most B-lines per rib space.

**As highly reliable as visual counting.<sup>4</sup>**



## cNerve

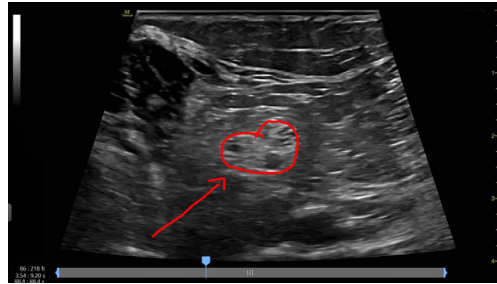
During the scouting phase, use cNerve to identify the nerve landmark and see it highlighted on the image. Helps detect and track the nerve in 99% of cases while scanning or reviewing a stored clip.<sup>5</sup>



# Simplify your workflow

Venue Go systems help eliminate busywork at the Point of Care. Easy documentation and protocol management tools reduce keystrokes, facilitate exam comparison, and streamline image organization for efficient review.

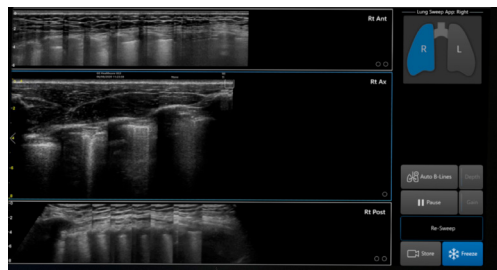
Scribble



## Scribble

Assists training with a touch-operated pointer and free-drawing capabilities.

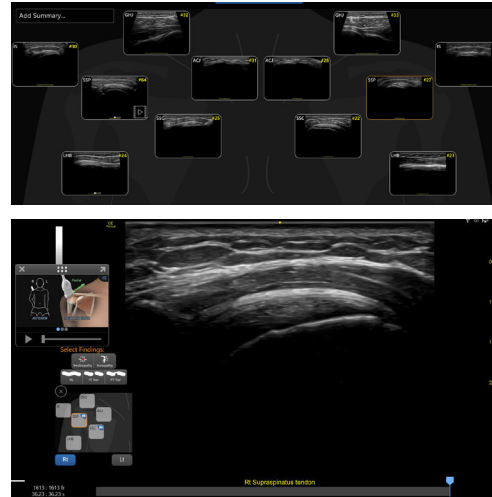
Auto Tool



## Lung Sweep

Visualizes a dynamic panoramic view of the entire lung.

MSK Tool Kit



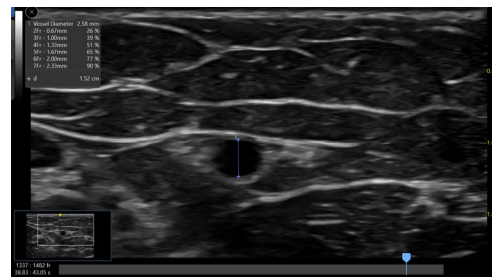
## MSK Tool Kit

**Shoulder Diagram** Simplifies shoulder exam documentation and follow-up by fast-tracking image labeling and image storage. Also facilitates patient therapy response by giving you the whole picture over treatment time.

**Reference image** provides anatomy markups to assist novice users in scanning the correct anatomy.

**Bilateral mode** helps you to view the opposite side of the same zone for comparison.

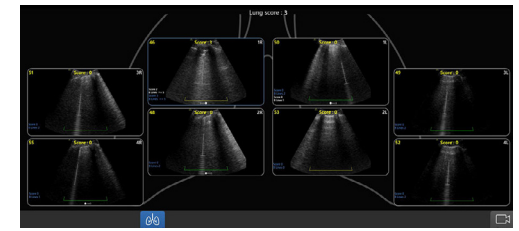
Measurement Feature



## Catheter to Vessel Ratio

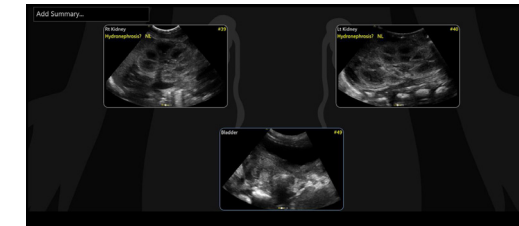
Supports you in selecting the appropriate sized catheter based on vessel diameter.

Real-time documentation



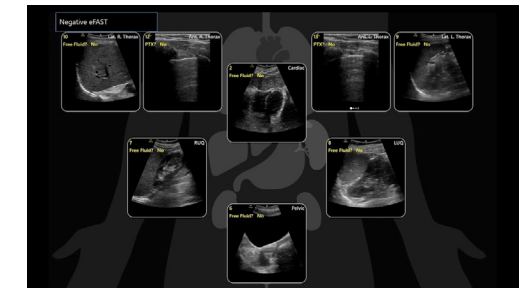
## Lung Diagram

A single view diagram of anatomical lung segments with one click image storing. Enables calculation of an overall Lung Ultrasound Score to help response to therapy.



## Renal Diagram

Simplifies hydronephrosis documentation and follow-up. Minimizes typing with labeling tools.



## eFAST Diagram

Allows users to assess and document patient status, from internal bleeding to pneumothorax, with up to an 80% reduction in keystrokes?

# Made for Your Point of Care

Inspired by the needs of Point of Care physicians, Venue Go supports a wide range of environments.



## Critical Care

AI-enabled tools, an intuitive interface, a compact footprint, and large screens optimize Venue Go for your quick decision-making and bedside interventional procedures

[Learn more](#)



## Emergency Medicine

A straightforward design, AI-enabled Auto Tools and nimble maneuvering help emergency room physicians quickly triage patients and determine care pathways.

[Learn more](#)



## Musculoskeletal

Clear and effective tools help MSK practitioners assess tendons, muscles and joints and manage patient progress during a course of treatment.

[Learn more](#)



## NICU & Pediatrics

The Venue Go AI-enabled tools for pediatrics^ enables fast and confident diagnostic scans without ionizing radiation for evaluation of the tiniest patients.

[Learn more](#)



## Perioperative Anesthesia

Simple, fast and precise tools support your clinical decision making so you can provide the best clinical outcomes for your perioperative patients.

[Learn more](#)



## Regional Anesthesia

Excellent image quality along with the tools needed to view the nerve, guide the needle, and ensure proper solution delivery, helping you provide the best clinical outcomes for your patients.

[Learn more](#)

# Made for security

**SonoDefense** is GE Healthcare's multi-layer strategic approach to cybersecurity and patient data privacy for ultrasound, and designed to:

- Keep the ultrasound machine safe and functional in the face of cyberthreats
- Protect patient data on the machine from unauthorized access
- Enable you to successfully implement HIPAA and security policies, while still managing productive daily workflows

## Defense-in-depth strategy

SonoDefense is designed for maximum security protection with a defense-in-depth strategy that incorporates security controls deployed in multiple layers. This approach enhances security by protecting the system against any particular attack using several independent methods.

## SonoDefense

Reduces potential points of attack

Seamlessly integrates into your facility's security ecosystem

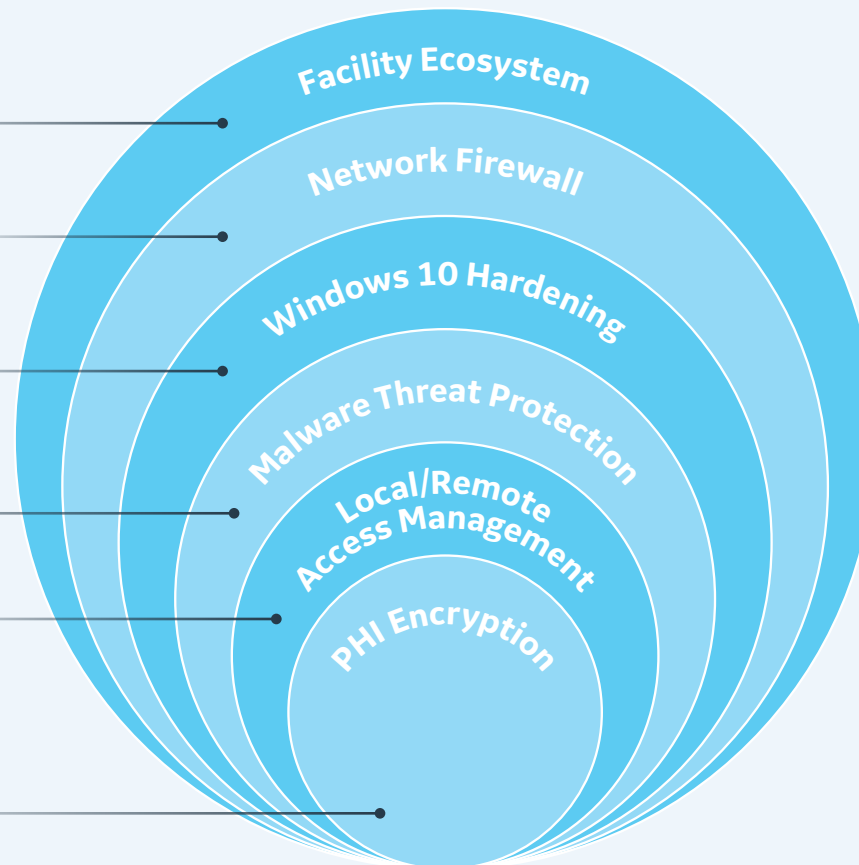
Blocks unused communication channels

Disables unneeded services in the Windows® 10 operating system

Limits what can be run

- Customizable, role-based access
- Federated identity management
- Session management
- Auditing
- Secure remote access

Customizable patient data encryption at rest and in transit



LEARN MORE ABOUT VENUE GO

Venue Go is part of the Venue Family of Point of Care ultrasound systems. To learn more about the Venue Family, [click here](#).



1. Venue and Venue Go R3 technical claims document (DOC2391130) Venue Fit technical claims document (DOC2454794) 5. In one study, the IVC measures were equivalent to an expert user's ability 87% of the time for minimal diameters and 92% for maximal diameters. Venue Go R2 Technical Product Claims Document DOC2199650.

2. Supporting evidence for Venue and Venue Go is documented in DOC2391130. Supporting evidence for Venue Fit is documented in DOC2454794.

3. Auto VTI can provide up to 90% reduction in keystrokes and take up to 82% less time than manual method calculations, as performed by experts. Based on GE Internal study with Venue Go DOC2254811.

4. A recent study found the Auto B-lines tool to be comparable to and as highly reliable as visual counting performed by experts. Short J, Acebes C, Rodriguez-de-Lema G, et al. Visual versus automatic ultrasound scoring of lung B-lines: reliability and consistency between systems. Med Ultrasonography 2019, Vol 21 no1, 45049 DOI: 10.11152/mu-1885.

5. Claims based on reading study- DOC2725435 Venue family R4 cNerve reading study.

6. Please consult your local GE Healthcare representative for warranty term information in your region. \*L12n-RS and M5Sc-RS are only available on Venue.

^Excluding neonates

© 2022 General Electric Company.

GE Healthcare reserves the right to make changes in specifications and features shown herein, or discontinue the product described at any time without notice or obligation. Contact your GE Healthcare representative for the most current information. GE, the GE Monogram, and Venue Go are trademarks of General Electric Company. Windows is a registered trademark of Microsoft Corporation. GE Healthcare, a division of General Electric Company. GE Medical Systems, Inc., doing business as GE Healthcare.

September 2022  
JB20304XX