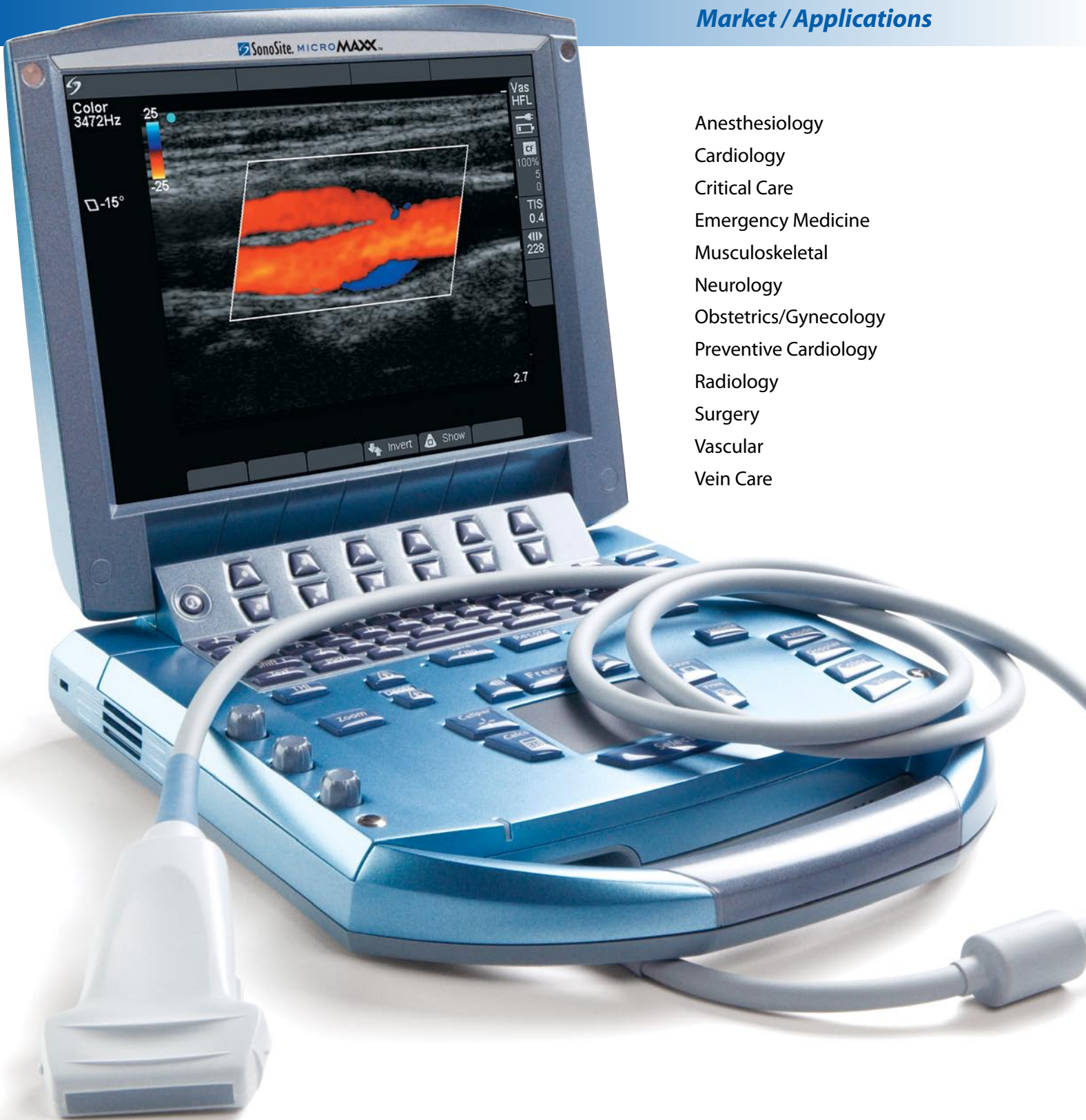


*Market / Applications*



- Anesthesiology
- Cardiology
- Critical Care
- Emergency Medicine
- Musculoskeletal
- Neurology
- Obstetrics/Gynecology
- Preventive Cardiology
- Radiology
- Surgery
- Vascular
- Vein Care

# MicroMaxx® System Specifications

## System Specifications:

<b>Weight</b>	7.7 lb (3.5 kg)
<b>Dimensions</b>	11.8" L x 10.8" W x 3.1" H (30.2 cm L x 27.7 cm W x 8.0 cm H)
<b>Display</b>	10.4" (26.4 cm) diagonal LCD (NTSC or PAL)
<b>Architecture</b>	All-digital broadband
<b>Number of channels</b>	128 channels
<b>Dynamic range</b>	Up to 165 dB
<b>Gray scale</b>	256 shades
<b>HIPAA compliance</b>	Comprehensive tool set

## Imaging Modes and Processing:

Broadband, multifrequency imaging:  
2D / Tissue Harmonic Imaging / M-mode  
Velocity Color Doppler / Color Power Doppler  
PW, PW Tissue Doppler and CW

Image processing:  
SonoMB™ compound imaging capability  
SonoRES™ image enhancement capability  
Dual imaging  
Duplex imaging  
2x pan/zoom capability  
Dynamic range and gain

## Transducers:

Broadband and multifrequency:  
Linear Array, Curved Array, Phased Array, Multiplane TEE and Micro-Convex  
Single frequency:  
Cardiac Static Pencil

## User Interface and Remappable Controls:

- Softkeys to drive advanced features
- Delta key: user-assigned functions for increased ease of use
- Alphanumeric QWERTY keyboard
- Track pad with select key for easy operation and navigation
- Doppler/M-mode controls: angle, steer, scale, baseline, gain and volume
- Image acquisition keys: review, report, VCR, Clip Store, DVD, save

## Application Specific Calculations:

### OB/Gyn/Fertility:

Diameter/ellipse measurements, volume, six follicle measurements, estimated fetal weight, established due date, gestational age, last menstrual period, growth charts, user-defined tables, multiple user-selectable authors, ratios, amniotic fluid index, patient report

### Vascular:

Diameter/ellipse/trace measurements, volume, volume flow, percent diameter and area reduction, Lt/Rt CCA, ICA, ECA, ICA/CCA ratio, time average mean (TAM), peak trace, ICA/CCA ratio, angle correction, patient report

### IMT (Intima Media Thickness):

SonoCalc® IMT software – automatic edge detection with mean and maximum thickness reporting

### Cardiac:

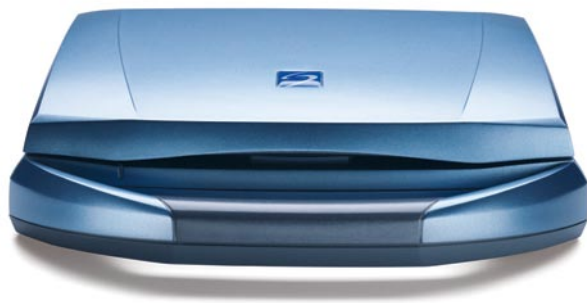
Complete cardiac calculations package and patient report including: ventricular, aortic and atrial measurements; ejection fraction, volume measurements, Simpson's rule, continuity equation, pressure half-time and cardiac output

### Transcranial Doppler (TCD):

Complete TCD package including Time Average Peak (TAP)

## Onboard Image and Clip Storage/Review:

Up to 4GB Flashcard storage capability  
Potential to store 40,000 images or 700 2-second clips  
Clip Store via ECG gated (up to 10 beats) or time-based (up to 6 seconds)  
digital image acquisition  
Cine review up to 220 frame-by-frame images



©2007 SonoSite, Inc. All rights reserved. Subject to change. MKT00766 Rev G/3.4 4-07

DICOM is the registered trademark of the National Electrical Manufacturers Association for its standards publications relating to digital communications of medical information.

## External Data Management or Wireless:

### DICOM® Image Management (TCP/IP)

Print and Store  
Modality Work List

### SonoROAM™ True Mobility wireless image transfer, 802.11b

### PC Workstation Image Management (TCP/IP, USB or Flashcard reader)

SiteLink™ Image Manager – allows transfer, archiving, viewing and printing of high resolution bitmap images/clips, and batch compression to JPEG on PCs

## Measurement Tools, Pictograms and Annotations:

### 2D

Distance calipers  
Ellipse and manual trace

### Doppler

Velocity measurements  
Pressure half time  
Volume flow calculation

### M-mode

Distance and time measurements  
Heart rate calculation

### User-selectable text and pictograms

### User-defined, application-specific annotations

### Biopsy guidelines

## External Video and Audio (requires an MDS, MDS Lite or separate minidock):

- S-video (in/out) to VCR or DVD for record and playback
- RGB or DVI output to external LCD display
- Composite video output (NTSC/PAL) to VCR, video printer or external LCD display
- Audio output
- Integrated speakers
- SonoROAM™ True Mobility wireless data transfer

## Power Supply:

System operates via battery or AC power

Rechargeable lithium-ion battery

AC: universal power adapter, 100-240 VAC, 50/60 Hz input, 15 VDC output

## Mobile Docking Stations and Peripherals:

### MDSe – Convenient Workstation:

- Storage for fully integrated printer, VCR and/or DVD
- Transducer holder and storage
- Optional Triple Transducer Connect allows the user to quickly activate transducers electronically
- Optional foot switch
- Optional 15" (38 cm) (diagonal) DVI monitor

### MDS Lite – Convenient Workstation:

- Storage for fully integrated printer, VCR or DVD
- Transducer holder and storage
- Optional Triple Transducer Connect allows the user to quickly activate transducers electronically
- Optional foot switch

Printers: Medical-grade black and white or color

External storage devices: Medical-grade VCR or DVD

ECG module: 3-lead ECG – works with standard ECG leads and electrodes



### WORLDWIDE HEADQUARTERS

SonoSite, Inc., 21919 30th Drive SE, Bothell, WA 98021-3904

Tel: (425) 951-1200 or (877) 657-8050 Fax: (425) 951-6800 E-mail: admin@sonosite.com

### INTERNATIONAL HEADQUARTERS

SonoSite Ltd., Alexander House, 40A Wilbury Way, Hitchin, Herts SG4 0AP, United Kingdom

Tel: +44 (0)1462 444800 Fax: +44 (0)1462 444801 E-mail: europe@sonosite.com

### SonoSite Worldwide Offices

SonoSite Australasia Pty Ltd – Australia 1-300-663-516

– New Zealand 0-800-888-204

SonoSite KK - Japan 81-3-5304-5337

SonoSite SARL - France 33-1-69-18-96-30

SonoSite - Germany 49-91-31-97-79-29-0

SonoSite - India Liaison Office 91-124-4028888

SonoSite Iberica SL - Spain 34-91-640-49-11

SonoSite Ltd - China - Shanghai 86-21-523-966-93

SonoSite Canada Inc. - Canada 1-888-554-5502