

# SonoSite Edge II

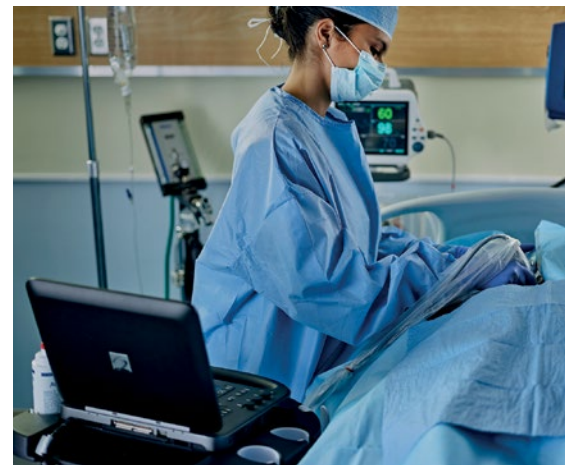
RUGGED.  
RELIABLE.  
RESPONSIVE.

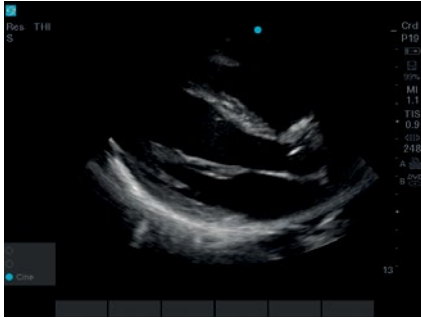


CLEAR ULTRASOUND DIAGNOSTICS  
FOR THOSE CRITICAL MOMENTS.

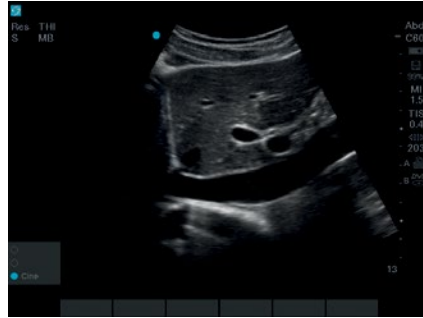


The SonoSite Edge II Ultrasound System offers you an enhanced imaging experience through industry-first transducer innovations like DirectClear and Armored Cable Technology. And, because it is a SonoSite, the Edge II stays true to our design pillars of durability, reliability and ease of use.

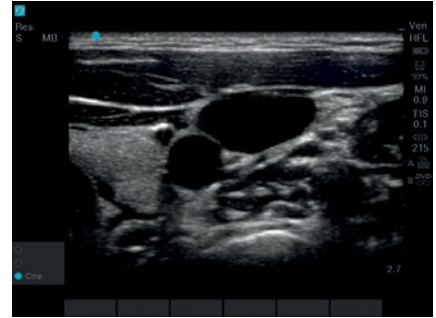




rP19x – Parasternal Long Axis Cardiac



rC60xi – Inferior Vena Cava



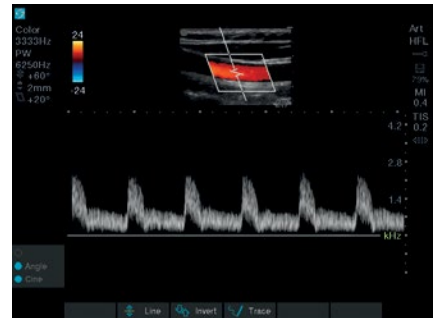
HFL38xi – Internal Jugular Vein



rP19x – Subcostal Cardiac



rC60xi – Portal Vein



HFL38xi – Common Carotid

## VISUALIZATION, CLEARLY ENHANCED.

### OPTIMIZED IMAGING EXPERIENCE

DirectClear Technology is a novel, patent-pending process that elevates transducer performance:

- Improved penetration and contrast resolution: Unlike conventional SonoSite transducers, a more efficient material has been embedded into the design that allows for the generation of more acoustic signal. In parallel, a reflective layer has been added to reduce the loss of this signal, as it is transmitted into the patient.
- Sharpened detail resolution: An additional layer has been added to provide a better acoustic match between the transducer and the patient, increasing the ability to resolve small structures and aid in your diagnostic confidence.

### ELEVATED COLOR SENSITIVITY

Through a dualflex and thin lens design, combined with new advancements in image optimization, the HFL38xi was enhanced to increase penetration, clarity and color sensitivity. You can now better visualize nerves and vessels, whether it be for procedural guidance or flow analysis.

# SonoSite Edge II

## TAKING TRANSDUCER DURABILITY TO THE ARMORED LEVEL

How often do transducer cables get rolled over, stepped on or twisted? Talking to our customers, the response is "all the time," "too often to count," or simply "a lot."

With an embedded metal jacket, armored cables protect your transducers from these common scenarios. By safeguarding electrical connections inside, armored cables help maintain image quality over the life of your transducer.

Standard Cable



Armored Cable



## ULTRASOUND FOR CLARITY AND CONFIDENCE.



TECHNOLOGY DRIVEN  
5-YEAR STANDARD WARRANTY  
MADE IN THE USA

Wide-angle, full-bleed glass display with anti-reflection etch for minimal adjustments during viewing

Keypad sealed to the edge to inhibit liquid ingress

Easy-to-use interface for intuitive access to frequently used functions like gain control

Low-profile keys with snap-dome technology for easy cleaning and tactile feedback



## SONOSITE EDGE II TRANSDUCERS



**L38xi** ●●

**10-5 MHz Linear**

**Applications:**

lung, nerve, small parts, arterial, venous

**Scan depth: 9 cm**



**HFL38xi** ●

**13-6 MHz Linear**

**Applications:**

breast, lung, musculoskeletal, nerve, ophthalmic, small parts, arterial, venous

**Scan depth: 6 cm**



**HFL50x** ●

**15-6 MHz Linear**

**Applications:**

breast, musculoskeletal, nerve, small parts

**Scan depth: 6 cm**



**L25x** ●●

**13-6 MHz Linear**

**Applications:**

lung, musculoskeletal, nerve, superficial, arterial, venous, ophthalmic

**Scan depth: 6 cm**



**C11x**

**8-5 MHz Curved**

**Applications:**

abdominal, neonatal, nerve, arterial, venous, cardiology (vet)

**Scan depth: 13.5 cm**



**rC60xi** ●●●

**5-2 MHz Curved**

**Applications:**

abdominal, musculoskeletal, nerve, ob, gyn

**Scan depth: 30 cm**



**ICTx** ●

**8-5 MHz Curved**

**Applications:**

ob, gyn

**Scan depth: 13 cm**



**rP19x** ●●

**5-1 MHz Phased**

**Applications:**

abdominal, cardiology, lung, ob, orbital, TCD

**Scan depth: 35 cm**



**P10x** ●

**8-4 MHz Phased**

**Applications:**

ped. abdominal, ped. cardiology, neonatal head

**Scan depth: 14 cm**



**HSL25x**

**13-6 MHz Linear**

**Applications:**

lung, musculoskeletal, nerve, superficial, arterial, venous, ophthalmic

**Scan depth: 6 cm**



**TEExi**

**8-3 MHz Multi**

**Applications:**

adult cardiology, multiplane transesophageal 180° rotation of the imaging plane, providing a 360° field of view

**Scan depth: 18 cm**



**L52x (Vet)** ●

**10-5 MHz Linear**

**Applications:**

musculoskeletal, ob, arterial

**Scan depth: 15 cm**



**C35x** ●

**8-3 MHz Curved**

**Applications:**

abdominal, musculoskeletal, nerve, ob, spine

**Scan depth: 15 cm**



**C8x** ●

**8-5 MHz Curved**

**Applications:**

prostate

**Scan depth: 11.5 cm**



**P11x**

**10-5 MHz Phased**

**Applications:**

venous, vascular

**Scan depth: 12 cm**

- DirectClear Technology.
- Optional Armored Cable.
- Needle guides and kits available.
- A transverse needle guide available.

## SYSTEM SPECIFICATIONS

<b>System weight</b>	9.21 lbs/4.18 kg with battery
<b>Dimensions</b>	12.8" x 12.1" x 2.5" 32.6 cm x 30.7 cm x 6.4 cm (L x W x H)
<b>Display</b>	12.1"/30.7 cm diagonal LCD (NTSC or PAL) with chemically- etched glass layer
<b>Viewing Angles</b>	85 degrees up/down/left/right
<b>Architecture</b>	All-digital broadband
<b>Dynamic range</b>	Up to 165 dB
<b>Gray scale</b>	256 shades
<b>HIPAA compliance</b>	Comprehensive tool set

## IMAGING MODES

2D / Tissue Harmonic Imaging / M-Mode  
Velocity Color Doppler / Color Power Doppler  
PW, PW Tissue Doppler and CW  
Doppler angle, correct after freeze

## IMAGE PROCESSING

SonoADAPT™ Tissue Optimization  
SonoHD2™ Imaging Technology  
Dual Imaging, Duplex Imaging, 2x pan/zoom  
capability, Dynamic range and gain  
ColorHD™ Technology

## STEEP NEEDLE PROFILING

C35x - Nerve, MSK, Spine  
HFL38xi - Nerve, MSK, Breast, Small Parts,  
Arterial, Venous  
HFL50x - Nerve, MSK, Breast, Small Parts  
L25x - Nerve, MSK, Arterial, Venous  
HSL25x - Nerve, MSK, Arterial, Venous  
L38xi - Nerve  
rC60xi - Nerve, MSK

## USER INTERFACE AND

### REMAPPABLE CONTROLS

Softkeys to drive advanced features  
Programmable A and B keys: each can be assigned by  
the user for increased ease of use  
Low profile keyboard, sealed completely to edge for  
maximum infection control  
Track pad with select key for easy operation  
and navigation  
Doppler controls: angle, steer, scale, baseline,  
gain and volume  
Image acquisition keys: review, report,  
clip store, save  
Dedicated AutoGain and exam keys to  
allow quick activation  
Color controls: size/position, angle, scale,  
baseline and invert

## TRANSDUCERS

### Broadband/Multifrequency:

DirectClear Technology (rC60xi, rP19x)  
Armored Cable Technology (Optional on rC60xi,  
rP19x, L38xi, L52x)  
Linear Array, Curved Array, Phased Array,  
Multiplane TEE and Micro-Convex  
Center line marker for linear transducers

**Exam types:** abdominal, breast, cardiology, gyn,  
lung, musculoskeletal, neonatal, nerve, ob, ophthalmic,  
orbital, small parts, spine, superficial, TCD, arterial,  
venous

## DURABILITY

Drop-tested at 3 feet/91.4 cm

## APPLICATION SPECIFIC CALCULATIONS

**OB/Gyn/Fertility:** Diameter/ellipse measurements,  
volume, ten follicle measurements, estimated fetal  
weight, established due date, gestational age, last  
menstrual period, growth charts, user-defined tables,  
multiple user-selectable authors, ratios, amniotic fluid  
index, patient report, humerus and tibia measurement  
and charts, HR, Fetal HR, MCA, UMBA, Ovarian  
Volume, Follicle Volume, Uterine Volume, Endometrial  
thickness

**Arterial:** Diameter/ellipse/trace measurements,  
volume, volume flow, percent diameter and area  
reduction, Lt/Rt CCA, ICA, ECA, ICA/CCA ratio,  
peak trace, ICA/CCA ratio, patient report, HR, Bulb,  
Vertebral Artery, TAP

**Cardiac:** LVO, Automated Cardiac Output package  
and patient report including: ventricular, aortic and  
atrial measurements; ejection fraction, volume  
measurements, Simpson's rule, continuity equation,  
pressure half-time and cardiac output; IVC Collapse  
Ratio, LA/RA Volume, TAPSE, PA AT, TV E, A, PHT,  
TVI, MV time, Pulm Veins, LV Mass, TDI e', TDI a', HR,  
dP:dT, Qp/Qs

Ability to view EF and FS simultaneously

**Transcranial Doppler (TCD):** Complete TCD package  
including Time Average Peak (TAP)

## ONBOARD IMAGE AND CLIP STORAGE/REVIEW

16GB internal flash memory storage capability  
Storage support for up to 500 patients  
Clip Store capability (maximum single clip length:  
60 seconds)  
Clip Store capability via either number of heart cycles  
(using the ECG) or time base. Maximum storage in  
ECG beats mode is 10 heart cycles. Maximum storage  
in time base mode is 60 seconds  
Start/Stop toggle capability for clips  
USB Auto Export  
Encryption of patient data on system  
Cine review up to 255 frame-by-frame images

## MEASUREMENT TOOLS, PICTOGRAMS AND ANNOTATIONS

**2D:** Distance calipers, ellipse and manual trace  
**Doppler:** Velocity measurements, pressure half time,  
auto and manual trace

**M-Mode:** Distance and time measurements,  
heart rate calculation

### User-selectable text and pictograms

### User-defined, application-specific annotations

### Biopsy guidelines

## CONNECTIVITY (EXTERNAL DATA MANAGEMENT)

SonoSite Patient Data Archival Software (PDAS) for  
Wireless/Wired Image, Report Management  
Q-path ultrasound management system  
DICOM® Image Management (TCP/IP): Print and  
Store, Modality Work List, Storage Commit: Modality,  
Perform, Procedure Step  
PC Workstation Image Management (TCP/IP, USB):  
Direct writing capability to USB 2.0 mass storage  
removable media (PC and MAC compatible)  
Supported export formats: MPEG-4 (H.264), JPEG,  
BMP, and HTML

## CONNECTIVITY (SYSTEM PORTS)

### Ports, External Video/Audio:

USB ports (2)  
ECG input (1)  
Integrated Speakers  
**With Mini-dock:**  
S-Video (in/out) to VCR for record and playback  
DVI output  
Composite video output (NTSC/PAL) to VCR or video  
printer  
Audio output  
Ethernet or Wireless Image/Data Transfer  
USB Port (1)  
RS-232 Transfer

## POWER SUPPLY

System operates via battery or AC power  
Rechargeable lithium-ion battery  
AC: universal power adapter, 100-240 VAC,  
50/60 Hz input, 15 VDC output  
Less than 25 sec. from power-on to scanning

## EDGE II STAND AND PERIPHERALS

Mini-dock, transducer and gel holders  
AC Cord Retainer  
Larger baskets with easy removal feature for cleaning  
Casters to prevent accidental locking  
Optional Triple Transducer Connect (TTC) to quickly  
activate transducers electronically  
Optional foot switch  
Optional PowerPark and PowerPack

## OPTIONAL PERIPHERALS

**Printers:** Medical-grade black and white or color  
**External data input devices:** Bar code reader  
**ECG Slave Cable and Adapter Kit:** Used to interface  
with external ECG monitors  
**ECG module:** 3-lead ECG - works with standard ECG  
leads and electrodes

Bluetooth is a registered trademark of Bluetooth SIG, Inc.

Mac is a trademark of Apple Inc., registered in the U.S. and other countries.

DICOM is the registered trademark of the National Electrical Manufacturers  
Association for its standards publications relating to digital communications  
of medical information.

**FUJIFILM**  
Value from Innovation

**FUJIFILM SonoSite, Inc.**  
Worldwide Headquarters  
21919 30th Drive SE, Bothell, WA 98021-3904  
Tel: +1 (425) 951-1200 or +1 (877) 657-8050  
Fax: +1 (425) 951-6800  
[www.sonosite.com/products/edgeii](http://www.sonosite.com/products/edgeii)

**SonoSite Worldwide Offices**  
FUJIFILM SonoSite Australasia Pty Ltd: Australia ..... 1300-663-516  
FUJIFILM SonoSite Australasia Pty Ltd: New Zealand ..... 0800-888-204  
FUJIFILM SonoSite Brazil ..... +55 11-5574-7747  
FUJIFILM SonoSite Canada Inc. .... +1 888-554-5502  
FUJIFILM (China) Investment Co., Ltd ..... +86 21-5010-6000  
FUJIFILM SonoSite GmbH - Germany ..... +49 69-80-88-40-30  
FUJIFILM SonoSite, Inc. - USA ..... +1 425-951-1200

FUJIFILM SonoSite India Pvt Ltd. .... +91 124-288-1100  
FUJIFILM SonoSite Italy S.r.l. .... +39 02-9475-3655  
FUJIFILM SonoSite Iberica SL - Spain ..... +34 91-123-84-51  
FUJIFILM SonoSite Korea Ltd ..... +65 6380-5589  
FUJIFILM SonoSite Ltd - United Kingdom ..... +44 1462-341151  
FUJIFILM SonoSite SARL - France ..... +33 1-82-88-07-02