

5 Routine maintenance

5.1 Charge the probe

Charge the probe when the battery is low. Pull out the rubber plug at the end of the probe and use a USB charging cable to connect the probe and the USB charger (or other USB port that can provide the power supply such as a charger) as shown below. When charging, the battery indicator flashes to indicate the current charge level.

If the 4-cell battery indicator is on and the battery indicator stops blinking, the battery is fully charged. At this point unplug the USB charging cable and carefully insert the stopper to keep the probe waterproof.



The probe also has a wireless charging function, which can be charged by placing the probe on a wireless charging pad or a wireless charging pad (Note: The dual-probe only supports the charging function can not USB charging)

5.2 Replacement battery

Pull out the rubber plug at the end of the probe, unscrew the two screws, and then gently scrape the connection between the shell and the sound head with a thin blade to remove the glue, and then remove the shell of the wireless probe and then remove the battery Tape, remove the battery replacement.

5.3 Clean

After the probe is used to clean the probe. The front of the probe can be rinsed directly with water or wiped with a damp cloth / paper towel. Probes with IPX-5 waterproof rating can be rinsed with fresh water for a short period of time, but do not immerse the probe directly into the water (unless special instructions have been made prior to ordering to seal the USB charging port, etc.).

5.4 Waterproof protection

Probes in the wild and other harsh environments, please pay attention to the probe and intelligent terminal equipment waterproof protection.

5.5 Storage

When not using the probe, please place the probe in a suitable package to avoid the impact of violent impact on the probe. And to avoid contact with the probe too high temperature (suitable storage temperature: 0 ° -40 °).

EUCProbeSM/A0



iPhone APP



iPad APP



Android APP

Scan QR code with QQ Or search for "Wireless Probes" on APPStore for iPhone / iPad to download and install software

Note: When you purchase a high version of the probe, if you use IPad, please use the iPair air 2 or above configuration, otherwise it may flashback or slowly. Other non-mainstream or new Android phones / tablets may not be supported.

Registrant/ Name of manufacturer:
Sonostar Technologies Co., Limited

Tel: 020-32382095 Fax: 020-62614030 Post Code: 510665
Company Address: fifthfloor, C Building, #27 Yayingshi Road, Science Town, Guangzhou, China.

Production licenses: Medical Device Manufacturing Permit from Guangdong Food and Drug Administration No.20132454

Product registration certificate: Guangdong Food and Drug Administration firearms production No.20162231592

Production Band: Sonostar Classify: II Class/Internal Power Supply

Product Serial Number: Check the production fuselage

External input voltage: DC5V Internal battery: DC3.8V Input power: 5VA

Date of manufacturer: Check production certification

Validity period: 10 Years Other brief introduction check the instructions



Wireless Probe Ultrasound Series Quick Operation Guide



Sonostar Technologies Co.,Ltd

1. Install software APP

If it is on your iPad or iPhone, open the APP Store, enter "WirelessUSG" in the search bar and locate the software to download and install. If you are installing on the Android tablet or mobile phone QQ Scan this operation guide back cover QR code or enter the URL
<http://sonostarmed.com/download/UProbeAndroidAPP.apk>
 Directly click the installation file to install.

2. Turn on / off the probe

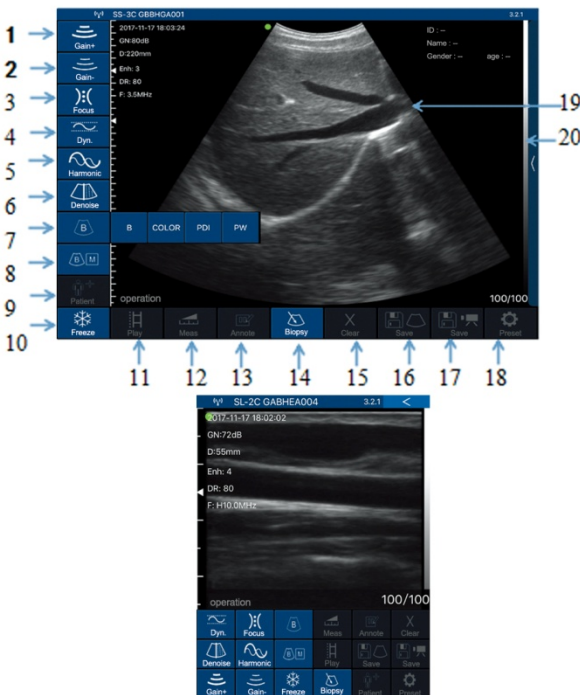
Press the power switch to open the probe, and then press to close the probe. After the probe is activated, the button short-press (1 second) to freeze / thaw kinetic energy, if it is double-headed probe, press the switch for 3 seconds.



3. probe and intelligent terminal Wifi connection

The first connection between the probe and the smart terminal device need to enter the Wifi password. After the probe is powered on, turn on the device's LAN Wifi settings and find the Wifi name of the wireless probe in the Wifi list (usually SS, SL, etc., beginning with the probe serial number The mantissa), click the Wifi and enter the password, the password for the probe's serial number (located in the probe charge port)

4. Tablet and mobile phone interface and features introduced



- 1) Gain +: Increase image gain
- 2) Gain -: Reduce the image gain
- 3) Focus: Adjust the focus of the image
- 4) Dynamic Range: Adjusts the dynamic range of the image
- 5) Frequency: You can change the working frequency of the probe
- 6) Noise reduction: used to eliminate low-level echo caused by noise
- 7) Image modes: B mode, blood flow mode, energy Doppler mode, pulsed Doppler mode
- 8) B / M mode: Image B / M mode
- 9) Patient Information Management: Patient Information Entry
- 10) Freeze / Run: Image freeze and thaw
- 11) Movie Playback: Playback after the image is frozen
- 12) Measurement: distance / area / obstetric measurement
- 13) Comment: Enter a comment on the image
- 14) Puncture: Draw the puncture line for puncture guidance
- 15) Clear measurements and comments: Clear the results and comments on the image
- 16) Save Image: Save a single image
- 17) Save Image Video: Save entire image video
- 18) Settings: WIFI channel selection in order to avoid congestion
- 19) Image depth adjustment: up and down toggle The image area on the screen can be changed
- 20) TGC function menu: Click on the right (the phone is the top right). To pop up

In the Doppler flow imaging and energy Doppler imaging modes, the bottom menu changes as follows:



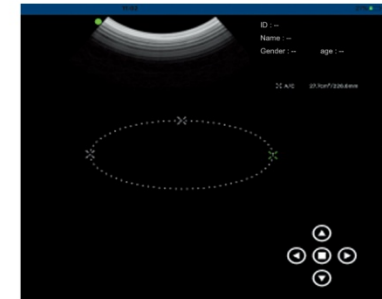
- 1) Deflection angle: change the direction of the color sample frame
- 2) Gain +: increase color blood flow gain
- 3) Gain -: Reduce color blood flow gain
- 4) Move / Zoom (click to switch between different functions)
Change the position and size of the color sampling frame by clicking and moving with your finger

In pulsed Doppler imaging mode, the bottom menu changes to the following:



- 1) deflection angle: real-time scanning state, used to change the spectrum sampling line angle
- 2) Gain +: Increase the pulse gain
- 3) Gain -: Reduce the pulse gain
- 4) Sampling volume: change the size of the sampling volume
- 5) In BM mode, you can adjust the position of the M sampling line by moving the following marks with your finger. The default value of the heartbeat count is 5 weeks

When measuring, if you need to fine-tune the location of the measuring point, click the measuring point to make it turn green. The following button will appear on the lower right corner. Click the arrow to adjust and confirm by pressing the middle square button.



After measuring, press the delete button to delete all the measurement results. If you want to delete a certain measurement, click on the X number to the right of the result on the result.

The puncturing function includes two types of in-plane and out-of-plane puncturing. The in-plane puncturing can adjust the angle by the arrow button in the lower right corner of the image. The out-of-plane puncturing can adjust the depth and size of the blood vessel and automatically prompt the blood vessel depth and radius in the lower right corner of the image.

When the system is used in exhibitions and other hot spots more WIFI crowded or have a strong source of interference environment, the image may appear Caton, this time can press the Settings button, in the following list of wifi channel list click on the selection list to select a different channel, And restart the probe for the channel selection to take effect. And then re-connect the probe WIFI in the WIFI management of the smart terminal (need to re-enter Wifi password)



The system default movie playback frame number 100, if you need more, can be set to set inside.

The system also has the DICOM function, the Android client's file storage location in the file management - internal storage device - WirelessUSG, Apple client's file storage location: USB cable connected to the computer to download iTunes software to open iTunes connection device a file Zhongxiang a wireless ultrasound - wireless Ultrasound documentation.