

Vivid S5 and S6 cardiovascular ultrasound


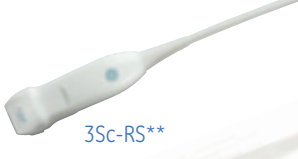





Transducer guide



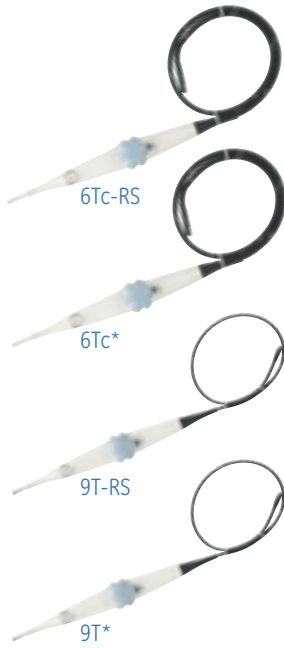
Comprehensive cardiovascular scanning.

Vivid[†] S5 and S6 feature a wide range of applications that help increase the system's versatility. The system's probes feature a ComfortScan design and the miniaturized RS connector, with ergonomics that help maximize ease of use and patient comfort. A lightweight transducer cable minimizes strain for the user, facilitating transducer placement.

Sector

	Cat #	Main Applications	Description	Footprint	Biopsy Guide	Scanner Frequency Ranges	Field of View	Depth of Field
	H4000PD	Adult Cardiac, Abdomen	Phased Array	19 x 27 mm	Multi-angle disposable, with a reuseable bracket	1.5 - 3.6 MHz	90°	30 cm
	H45041DL	Adult Cardiac, Abdomen	Phased Array	18 x 24 mm	Multi-angle disposable, with a reuseable bracket	1.3 - 4.0 MHz	90°	30 cm
	H40452LH	Adult Cardiac, Abdomen	Phased Array	20 x 28 mm	Multi-angle disposable, with a reuseable bracket	1.5 - 3.6 MHz	90°	30 cm
	H45021RP	Pediatric Cardiac, Neonatal Head	Phased Array	17 x 23 mm		2.7 - 8.0 MHz	90°	16 cm
	H4000PE	Pediatric Cardiac, Neonatal Head	Phased Array	17 x 24 mm		3.5 - 8.0 MHz	90°	16 cm
	H4000PF	Pediatric Cardiac, Neonatal Head	Phased Array	14 x 21 mm		4.5 - 11.5 MHz	90°	12 cm
	H44901AB	Pediatric Cardiac, Neonatal Head	Phased Array	13 x 18 mm		5.0 - 11.0 MHz	90°	12 cm

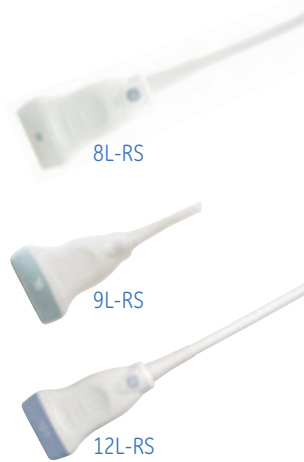
Transesophageal



Cat #	Main Applications	Description	Footprint	Biopsy Guide	Scanner Frequency Ranges	Field of View	Depth of Field
H45551ZE	Adult Cardiac	Multi-plane Phased Array TEE	12 x 14 mm with length of 45 mm		2.9 - 8.0 MHz	90°	20 cm
H45551ZD	Adult Cardiac	Multi-plane Phased Array TEE	12 x 14 mm with length of 45 mm		2.9 - 8.0 MHz	90°	20 cm
H45531YM	Pediatric Cardiac	Multi-plane Phased Array TEE	7.5 x 10.7 mm with length of 37.5 mm		4.0 - 10.0 MHz	90°	14 cm
H45521DY	Pediatric Cardiac	Multi-plane Phased Array TEE	7.5 x 10.7 mm with length of 37.5 mm		4.0 - 10.0 MHz	90°	14 cm

* Only Vivid S6

Linear



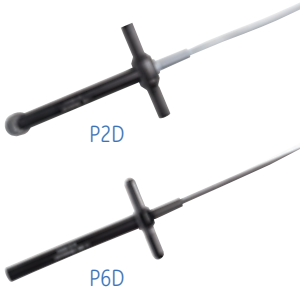
Cat #	Main Applications	Description	Footprint	Biopsy Guide	Scanner Frequency Ranges	Field of View	Depth of Field
H40402LT	Vascular, Small Parts, Thyroid	Linear Array	14 x 48 mm	Multi-angle disposable, with a reuseable bracket	4.0 - 13.0 MHz	38 mm	10 cm
H40442LL	Vascular, Small Parts, Thyroid	Linear Array	14 x 53 mm	Multi-angle disposable, with a reuseable bracket	3.1 - 10.0 MHz	44 mm	12 cm
H40402LY	Vascular, Small Parts, Thyroid	Linear Array	14 x 47 mm	Multi-angle disposable, with a reuseable bracket	6.0 - 13.0 MHz	38 mm	10 cm

Convex



Cat #	Main Applications	Description	Footprint	Biopsy Guide	Scanner Frequency Ranges	Field of View	Depth of Field
H4000SR	Abdomen, Ob/Gyn	Curved Array	17 x 65 mm	Multi-angle disposable, with a reuseable bracket	1.8 - 6.0 MHz	58°	30 cm
H40402LS	Pediatric Abdominal, Neonatal Head	Curved Array	12 x 21 mm		4.0 - 11.0 MHz	128°	14 cm

Doppler



Cat #	Main Applications	Description	Footprint	Biopsy Guide	Scanner Frequency Ranges	Field of View	Depth of Field
H4830JE	Cardiac	Pencil Probe	16 mm		2.0 MHz	N/A	N/A
H4830JG	Vascular	Pencil Probe	8 mm		6.0 MHz	N/A	N/A

Special



Cat #	Main Applications	Description	Footprint	Biopsy Guide	Scanner Frequency Ranges	Field of View	Depth of Field
H40402LN	Obstetrics, Gynecology	Curved Array	23 x 23 mm	Single-angle disposable	4.0 - 11.0 MHz	128°	14 cm
H40402LW	Intra Operative (Non Cardiac), Vascular, Small Parts	Linear Array	14 x 33 mm		5.0 - 13.0 MHz	25 mm	6 cm

Modes	Probes																				
	3S-RS**	3Sc-RS**	M4S-RS*	6S-RS	7S-RS	10S-RS	12S-RS	6Tc-RS	6Tc*	9T-RS	9T*	8L-RS	9L-RS	12L-RS	4C-RS	8C-RS	P2D	P6D	e8C-RS	i12L-RS	
2D	■	■	■	■	■	■	■	■	■	■	■	■	■	■	■	■	■	■	■	■	■
Harmonics	■	■	■	■	■	■	■	■	■	■	■	■	■	■	■	■	■	■	■	■	■
Color	■	■	■	■	■	■	■	■	■	■	■	■	■	■	■	■	■	■	■	■	■
M-Mode	■	■	■	■	■	■	■	■	■	■	■	■	■	■	■	■	■	■	■	■	■
PW Doppler	■	■	■	■	■	■	■	■	■	■	■	■	■	■	■	■	■	■	■	■	■
CW Doppler	■	■	■	■	■	■	■	■	■	■	■	■	■	■	■	■	■	■	■	■	■
TVI/TT***	■	■	■	■	■	■	■	■	■	■	■	■	■	■	■	■	■	■	■	■	■

* Only Vivid S6

** Only Vivid S5

***SI/SRI and TSI are also available, but only on the Vivid S6

		Probes																				
		3S-RS**	3Sc-RS**	M4S-RS*	6S-RS	7S-RS	10S-RS	12S-RS	6Tc-RS	6Tc*	9T-RS	9T*	8L-RS	9L-RS	12L-RS	4C-RS	8C-RS	P2D	P6D	e8C-RS	i12L-RS	
Applications	Abdominal																					
	Abdominal Pediatric																					
	Aorto-Iliac																					
	Breast																					
	Cardiac																					
	Carotid																					
	Coronary																					
	Exercise (Stress)																					
	FAST																					
	FATE																					
	Fetal Heart																					
	HFR (High Frame rate)																					
	Hip Joint																					
	LEA																					
	LEV																					
	LVO Contrast																					
	LVO Stress																					
	Lung																					
	Musculoskeletal																					
	Neonatal Head																					
	Nerves																					
	Obstetrics																					
	Pediatric																					
	Pelvic																					
	Pharm Stress																					
	Renal																					
	Small Organs																					
	Small Parts																					
	Superficial																					
	Transcranial																					
Thyroid																						
UEA																						
UEV																						
Vertebral																						

* Only Vivid S6

** Only Vivid S5

Note: Some applications depend on the availability of certain options.

Note: Some of the probes, options or features described in this data sheet may NOT be available for sale in all countries.

GE Healthcare
 9900 Innovation Drive
 Wauwatosa, WI 53226
 U.S.A.

www.gehealthcare.com



imagination at work

©2012 General Electric Company - All rights reserved.

General Electric Company reserves the right to make changes in specifications and features shown herein, or discontinue the product described at any time without notice or obligation.

GE and GE Monogram are trademarks of General Electric Company.

GE Medical Systems Ultrasound & Primary Care Diagnostics, LLC, a General Electric Company, doing business as GE Healthcare.

‡Trademark of General Electric Company.