

AX2

Veterinary Diagnostic Ultrasound

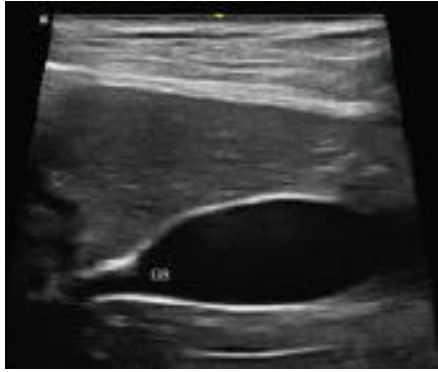


The AX2 VET has been designed from the relentless focus on delivering uncompromising performance at a cost-effective price. Alone with the unique dual-batteries inspiration in a 4.5kg lightweight magnesium alloy body, the remarkable AX2 2 VET delivers surprising value to meet all the demands for animals.

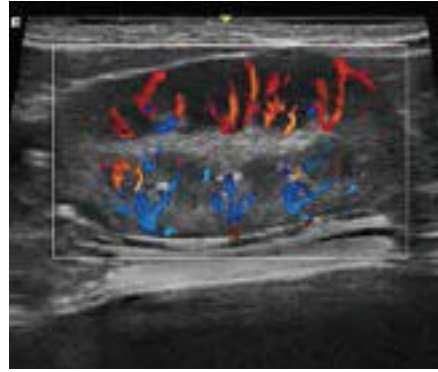
- Highly sensitive 15" touch screen
- 180 degree opening angle
- Dedicated presets and measurement packages for veterinary applications
- Customizable user interface
- Dual batteries for ultra-long scanning (2+ hours)
- Ultra-light and compact
- Multiple data managing methods: DICOM and Network
- PDF, AVI, BMP file export
- Superb detail resolution
- Tissue Adaptive Imaging (TAI)

Definitive Image Quality

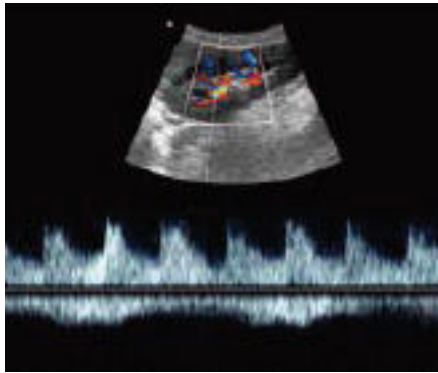
Revolutionary platform with superb detail resolution.



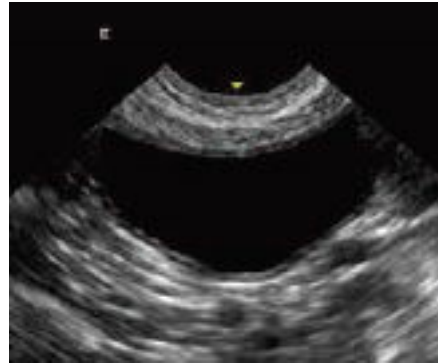
Clear display of canine gallbladder



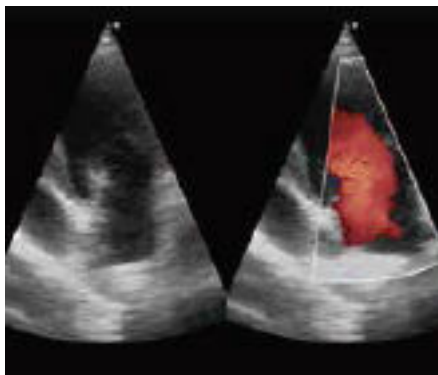
TAI in action- providing excellent detail, resolution, and color sensitivity



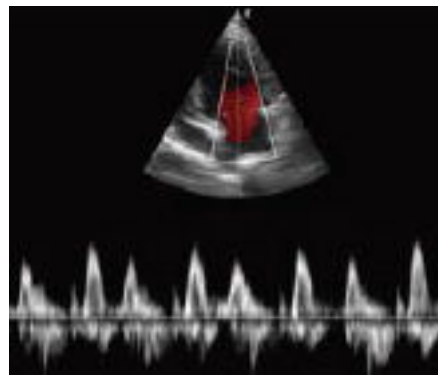
Renal spectrum



Uniform internal echo displaying a canine's bladder



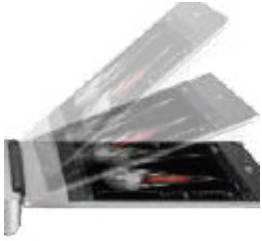
Adult phased array probe showing blood flow during a cardiac examination



Pediatric phased array probe delivering an excellent spectrum without any background noise.

Distinctive Design

Highlighted Features



180 degree screen rotation



Dual battery design



Ergonomic control panel



Ultra-portable design

Transducers



L12-5Q
5 -12 MHz
Linear Array
Small parts, abdomen



L17-7Q
7 -17 MHz
Linear Array
Small parts, abdomen



C5-2Q
2 - 5 MHz
Curved Array
Large breed abdomen



MC8-4Q
4 - 8 MHz
Micro-convex Array
Abdomen, basic cardiac



P5-1Q
1 - 5 MHz
Phased Array
Cardiac



P7-3Q
3 - 7 MHz
Phased Array
Cardiac



VEL12-5Q
5 - 12 MHz Endocavity
Linear Array Reproduction



VEL8-3WQ
3 - 8 MHz
Endocavity Linear Array
Reproduction



MC9-3TQ
3 - 9 MHz
Micro-convex Array
Equine hoof, abdomen, cardiac