

The image shows a Siemens ACUSON S2000 Ultrasound System. It features a large monitor at the top displaying the Siemens logo and the HELX Evolution logo. Below it is a smaller, tilted touch-screen monitor displaying "ACUSON S2000 ULTRASOUND SYSTEM", "Hi!", and the HELX Evolution logo. The main console has a control panel with numerous buttons and a trackball. The system is mounted on a stand with blue and grey ergonomic armrests.

SIEMENS

HELX
EVOLUTION
WITH TOUCH CONTROL

ACUSON S2000
ULTRASOUND SYSTEM

Hi!

HELX
EVOLUTION
WITH TOUCH CONTROL

siemens.com/touch

Expanded Insights

ACUSON S2000 Ultrasound System,
HELX Evolution with Touch Control



Ultrasound – Designed by You.

If you could design your own ultrasound system, what would you do? We conducted over 170 usability sessions and spoke with 395 healthcare professionals* from around the world to find out what they wanted in an ultrasound system.

Their most common request: An intuitive and smart ultrasound system that enables healthcare providers to effectively manage today's demanding caseloads and diversity of clinical choices.

The ACUSON S2000™ ultrasound system, HELX™ Evolution with Touch Control was designed with a dedicated focus on General Imaging and Women's Health. It offers new levels of workflow efficiency, imaging performance and sustainability.

*Data on file.



Workflow

Increase process efficiency and patient throughput with intuitive workflow innovations



Imaging Performance

Strengthen clinical capabilities with enhanced imaging technologies that advance diagnostic clarity



Sustainability

Investment protection with an upgradeable ultrasound architecture that addresses evolving needs



Workflow

Efficient Workflow – Designed for You.

Increase your process efficiency and patient throughput with intuitive workflow innovations offered by the ACUSON S2000 system, HELX Evolution with Touch Control.

Powered by an intuitive, user-centric interface, the system promotes streamlined exam flows to improve exam quality with less effort. Its new usability concept helps to eliminate unnecessary keystrokes and repetitive hand movements providing a whole new lever of user performance.

Intuitive Touch Display

- 12.1-inch (30.7) high-resolution display with Instant Response technology allows for precise key selections
- Tab folder browsing improves walk-up usability by eliminating hidden menus and swipe searching

Simplified Control Panel

- Fewer keys and a simplified home-base control structure help to optimize exam workflows and reduce training time
- Laser-optical trackball promotes sensitivity and accuracy in measurements and helps reduce repetitive stress injuries
- Digital and tactile keyboards increase flexibility for different user preferences and workflow situations



44%
fewer soft keys*

33%
fewer tactile keys*

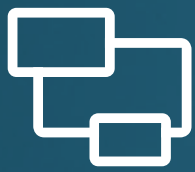
22%
fewer home-base keys*

Workflow Innovations

- Context-sensitive body markers feature intuitive pictograms, transducer markers and supportive protocols
- Smart-swap annotations with color-coded guidance simplify annotations by suggesting logical replacement text specific to the exam being performed
- Directly access and control eSieScan™ workflow protocols through the touch display



* Compared to ACUSON S Family, Classic release. Data on file.



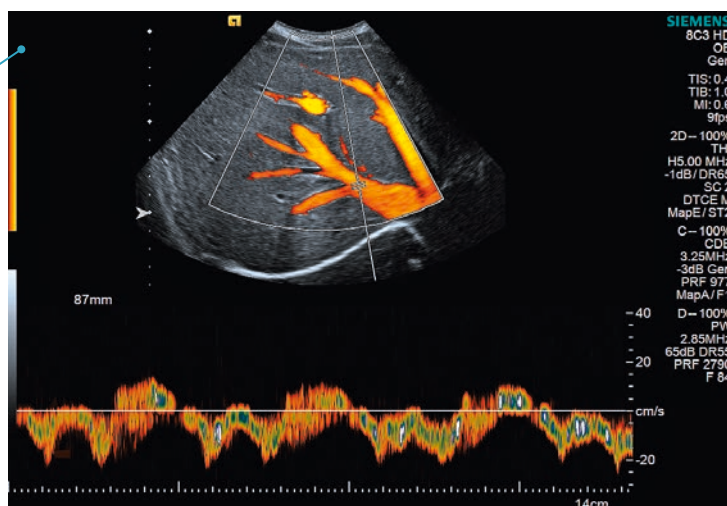
Imaging Performance

Advanced Technologies – Available to You.

ACUSON S2000
ULTRASOUND SYSTEM

Expand Clinical Insights with HD Transducer Technology

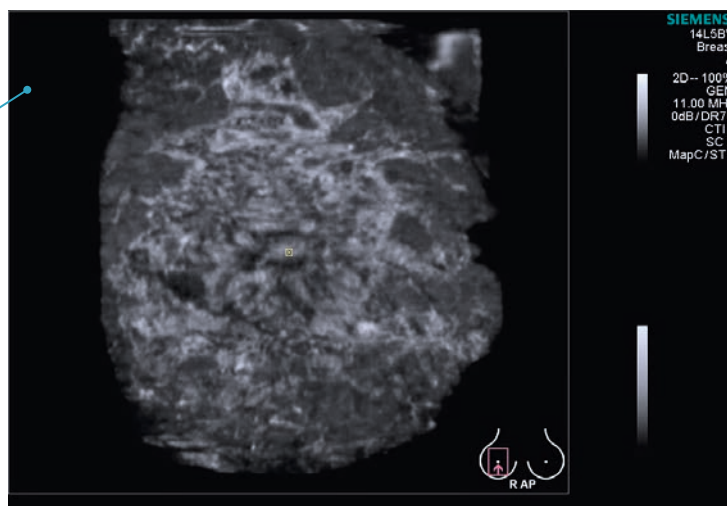
- HD transducer technology delivers excellent detail and contrast resolution for sharper images
- Full-body coverage, full range of exams – radiology, obstetrics, pediatrics, gynecology and small parts
- Innovative ergonomics featuring palmar or ridged grip coating to improve imaging comfort



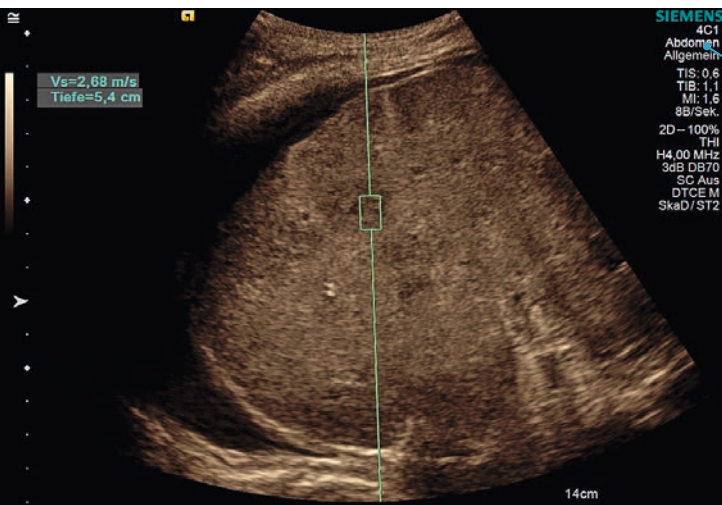
Improve diagnostic clarity with exceptional color Doppler spatial resolution combined with PW Doppler sensitivity using the 8C3 HD transducer.

Automated Breast Volume Scanning (ABVS) with 3D Total Breast Ultrasound

- ACUSON S2000™ Automated Breast Volume Scanner (ABVS) for automated 3D and hand-held imaging of the breast
- Consistent, operator-independent breast ultrasound results to improve patient care
- Tissue strain analytics for deeper insights into dense breast tissue
- Efficient operation and analysis tools



Evaluate breast masses, such as this fibroadenoma, in dense breast tissue with improved confidence using Automated Breast Volume Scanning.



Quantify liver stiffness while potentially reducing biopsies for liver disease patients with Virtual Touch™ quantification.

Evaluate Tissue Stiffness with Shear Wave Elastography

- Based on Acoustic Radiation Force Impulse (ARFI) imaging, Siemens' unique Virtual Touch™ technologies provide a new dimension of ultrasound information
- Qualitative imaging or quantitative shear wave tissue measurements across multiple transducers and study types

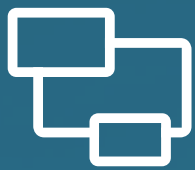


Improve near-field and detail resolution in tumor vascular analysis: excellent visualization of this liver metastasis using Cadence CHI.

Experience In-depth Anatomy Visualization with Contrast Enhanced Ultrasound* (CEUS)

- Designed for visualization of lesions in organs based upon vascularity and micro-bubble visualization
- Cadence™ Contrast Harmonic Imaging* (CHI) for the visualization of stunning detail
- Cadence™ Contrast Pulse Sequencing* (CPS) for penetrating clarity

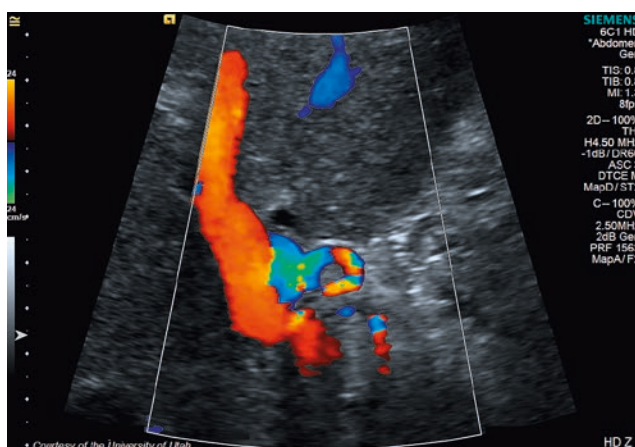
* At the time of publication, the U.S. Food and Drug Administration has cleared ultrasound contrast agents only for use in LVO. Check the current regulation for the country in which you are using this system for contrast agent clearance.



Imaging Performance

Beautiful Images – Acquired by You.

The unique signal processing algorithm of the SieStream™ HD architecture works to produce the highest signal fidelity for the HELX Evolution with Touch Control systems. The SieStream HD architecture optimizes signal integration between transducer and display by doubling the standard pixel density. The result: beautiful images to let you make a diagnosis with the highest confidence.



Evaluate the patency of vessels with the superb color Doppler spatial resolution of the 6C1 HD transducer, as in this transjugular intrahepatic portosystemic shunt (TIPS).

General Imaging



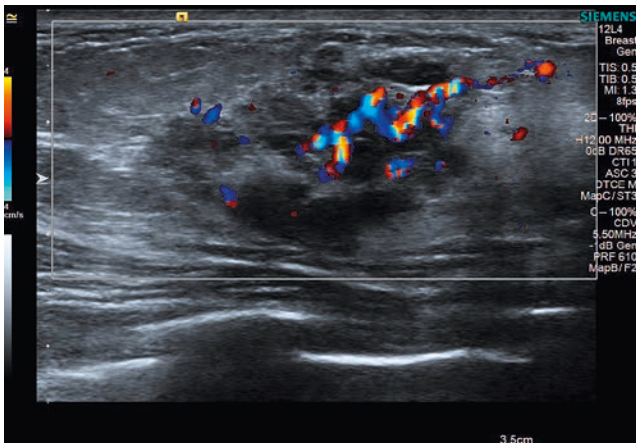
Frame-by-frame, hands-free image optimization with eSieImage™ multiparametric optimization. Balance gain, reduce noise and improve image quality as demonstrated in this abdominal hematoma.



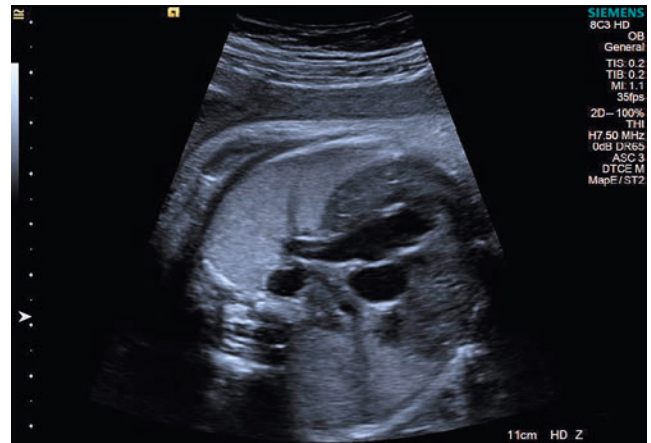
Visualize more with the wide field of view and increased far-field image width of the 18L6 HD transducer and virtual format imaging.



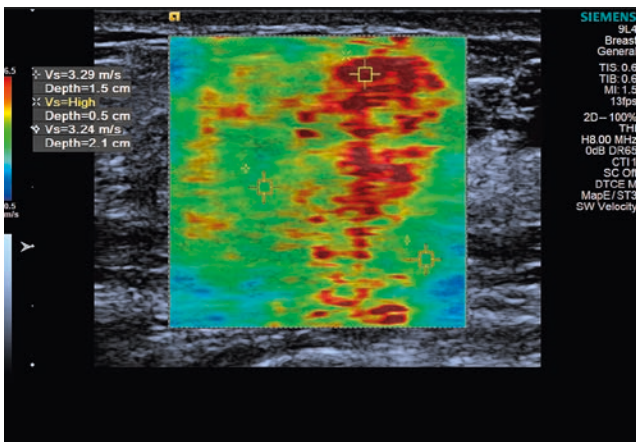
Women's Health



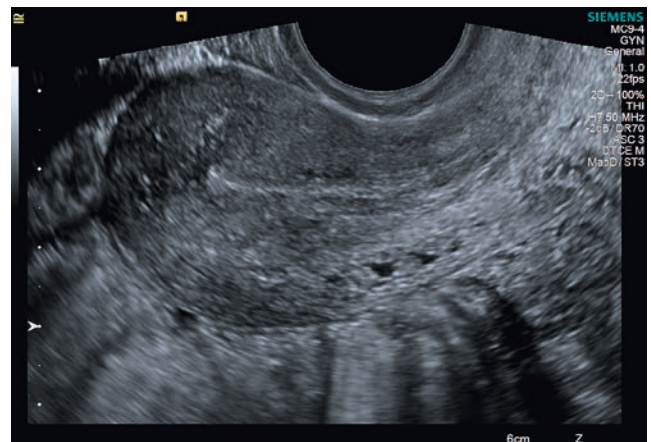
Visualize excellent detail resolution in tumor vascularity, as in this ductal carcinoma in situ, with the 12L4 transducer.



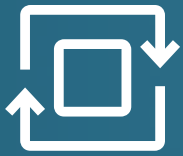
The 8C3 HD transducer delivers exquisite detail and contrast resolution of fetal structures, as demonstrated in this thymus gland.



Shear wave elastography with Virtual Touch™ IQ in this ductal carcinoma in situ: Gain additional clinical information by non-invasively evaluating lesion stiffness.



Improve patient comfort in endovaginal imaging by reducing exam time with automatic, continuous image optimization using eSiImage optimization.



Sustainability

Investment Protection – Customizable for You.



The ACUSON S2000 system, HELX Evolution with Touch Control is designed to adapt to your standard of care. From usability to technical compliance standards, Siemens has worked to ensure that the system you invest in today will be up-to-date and ready to integrate the most advanced technologies for years to come. This allows you to manage your costs without compromising your quality of care.



Access to General Imaging Technology and Basic Packages, Including

- Advanced SieClear™ spatial compounding
- Clarify™ vascular enhancement (VE) technology
- SieScape™ panoramic imaging
- eSielImage multiparametric optimization
- Multi-modality review
- Data transfer to Nuance® Powerscribe 360
- Wireless DICOM reporting (optional)

Comprehensive Service Packages

- Siemens Performance Plans for optimal system performance
- ASCEND* upgrades for maximum investment protection
- Ultrasound Evolve* software Updates to enhance productivity
- Siemens Remote Service™ for fast diagnosis and software delivery
- Ultrasound system security to deliver confidence and compliance

Microsoft® Windows® 7 Integration

- Improved network security and system stability
- Enhanced compatibility with electronic medical systems
- Scalable for the future

*Due to regulatory reasons, future availability cannot be guaranteed.

Standalone clinical images may have been cropped to better visualize pathology.

ACUSON S2000, Advanced SieClear, Cadence, Clarify, eSieImage, eSieScan, HELX, SieScape, SieStream and Virtual Touch are trademarks of Siemens Medical Solutions USA, Inc.

Siemens Remote Service is a trademark of Siemens Healthcare GmbH.

Nuance PowerScribe 360 is a trademark of Nuance Communications.

Microsoft and Windows are trademarks of Microsoft Corporation.

QR Code is a registered trademark of DENSO WAVE INCORPORATED.

Read the QR Code® with the QR Code reader in your mobile!



Siemens Healthcare Headquarters

Siemens Healthcare GmbH
Henkestr. 127
91052 Erlangen
Germany
Phone: +49 9131 84-0
siemens.com/healthcare

Legal Manufacturer

Siemens Medical Solutions USA, Inc.
Ultrasound
685 East Middlefield Road
Mountain View, CA 94043
USA
Phone: +1-888-826-9702
siemens.com/ultrasound