



Echo Made Easy

General Cardiology

ACUSON SC2000 PRIME
Ultrasound System

Release
5.1

The ACUSON SC2000 PRIME ultrasound system provides improved confidence and efficiency for every diagnostic echo with AI-powered applications.

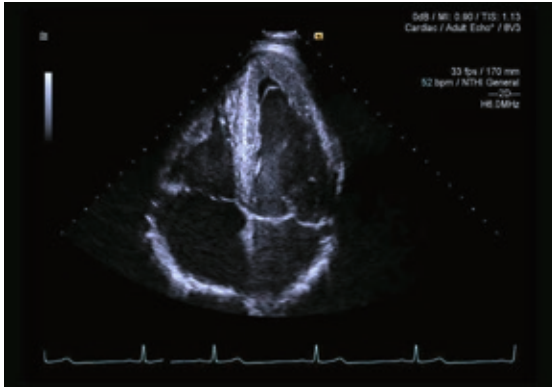
- **See the Unseen:** See the whole story of the heart with form, flow, and function on the only system on the market that can image in 2D and 3D TTE, 2D and 3D TEE, and ICE.*
- **Quantify Every Detail:** Enhance the accuracy of your measurements with the most comprehensive suite of accurate and reproducible one-click AI-powered 2D and 3D quantification tools.
- **Accelerate Your Workflow:** Perform rapid one-click automated measurements that increase exam quality by lowering user variability.

The one complete solution, the ACUSON SC2000 PRIME can help improve all areas of patient management, from diagnosis to pre-procedural planning, from treatment to follow-up.

Siemens Healthineers offers three shared service cardiovascular products: ACUSON Juniper, ACUSON P500, ACUSON S Family and ACUSON X700 ultrasound systems. The ACUSON SC2000 PRIME is the dedicated premium cardiovascular ultrasound offering in Siemens Healthineers cardiology segment.

*Based on competitive data available August 2017.

2D Echo



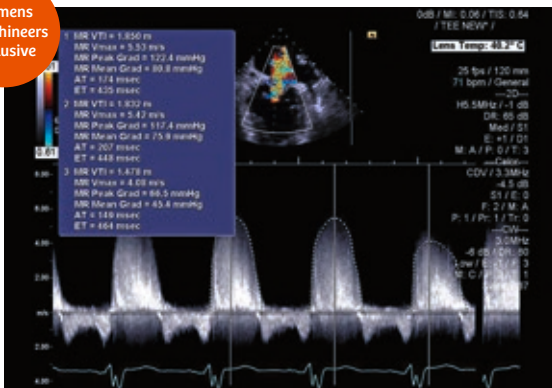
IN Focus Coherent Technology

See the whole image in focus, with excellent detail and more defined endocardial borders.



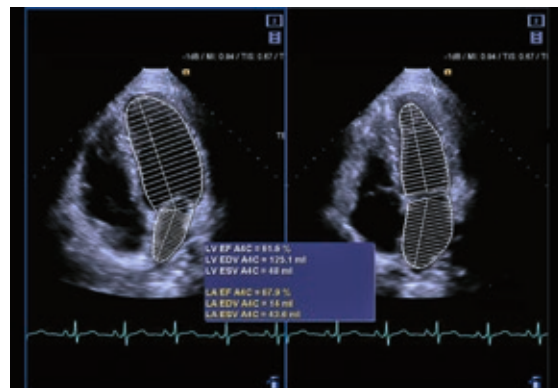
True Fidelity color Doppler

Improve diagnostic confidence with exceptional color resolution and with improved physiological presentation of color while reducing artifact and color flash.



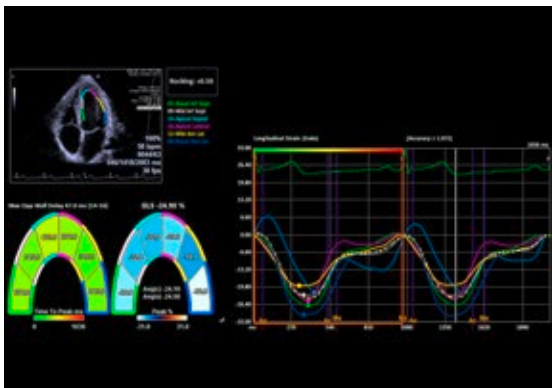
eSie Measure Workflow Acceleration

Improve quality and reproducibility by integrating one-click automated measurements and eSie Scan protocols to ensure complete, consistent exams in less time.



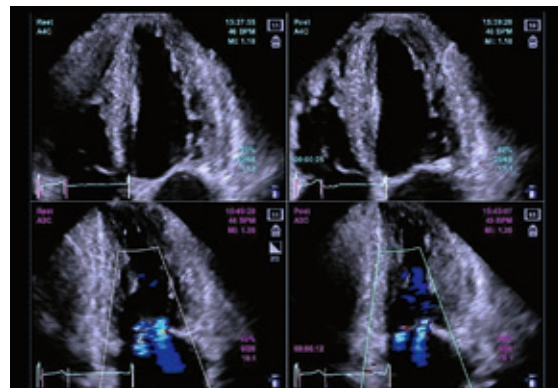
eSie Left Heart

Achieve one-click fast and reproducible ejection fraction (EF) measurements for both LV and LA without manual tracing simultaneously for systole and diastole.



eSie VVI Velocity Vector Imaging Technology

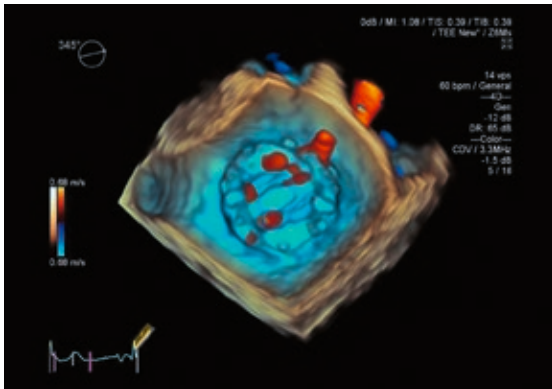
Accurately quantify strain, strain rate, and GLS for any heart chamber.



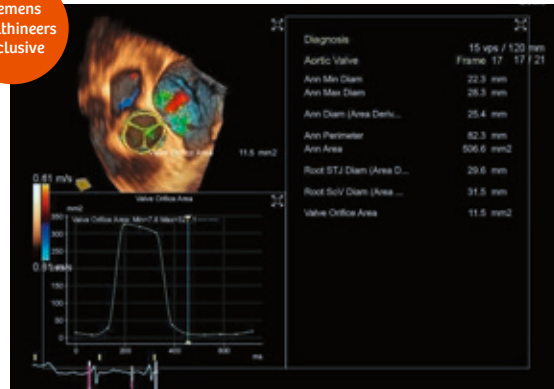
2D Stress Echo

Intuitively acquire and assess pre and post images for a complete stress echo.

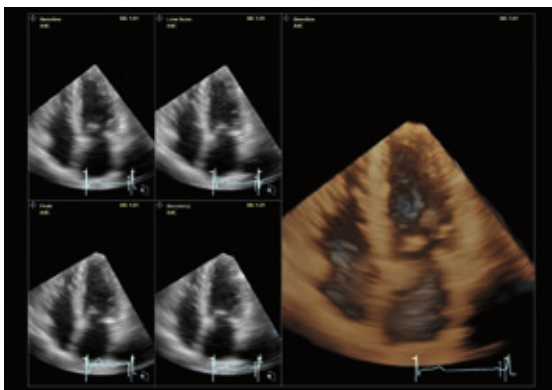
3D/4D True Volume



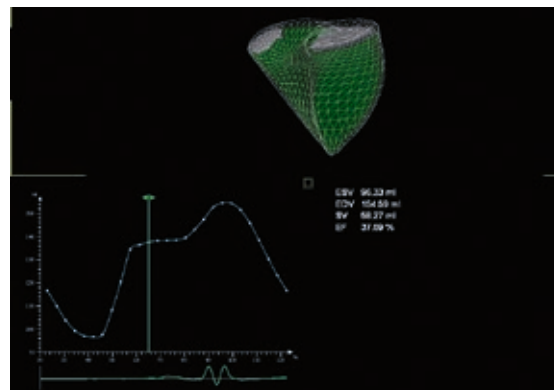
Real-time Imaging with Volume Color Doppler
 Visualize full volume and volume color Doppler at clinically relevant volume rates and size without stitching, just as easy and real-time as your 2D imaging.



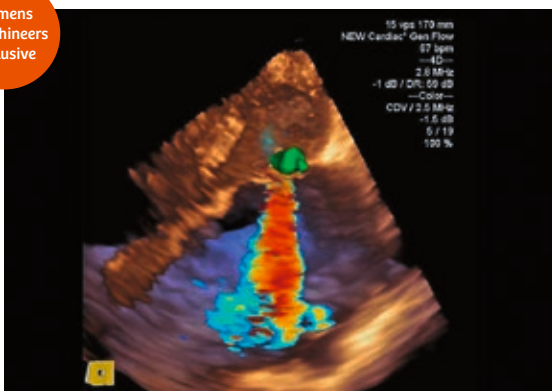
eSie Valves Advanced Analysis
 Improve workflow with 3D modeling of the mitral and aortic valves within seconds, with up to 60 measurements for diagnosis, intervention and surgery.



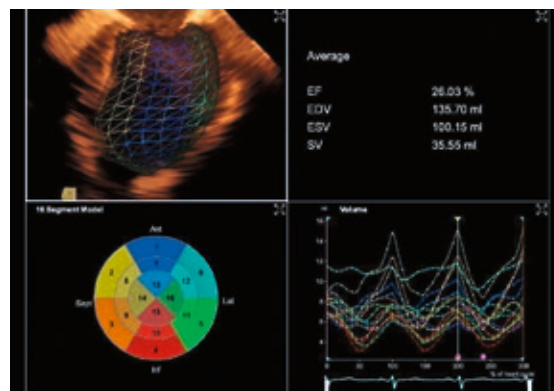
3D Rapid Stress Volume Echo
 3D stress echo accelerates analysis through non-stitched full-volume acquisition per stage – even for patients with arrhythmia and dyssynchrony – with automatically extracted 2D views for rapid analysis.



Right Ventricular Analysis (RVA)
 Volume RVA is designed specifically to provide you the required insights for the complex anatomy of the right ventricle. Analysis includes Global Volume Curve and Ejection Fraction.



eSie PISA Volume Analysis
 Quantify regurgitant volume and EROA in 3D without geometric assumptions.



eSie LVA Volume LV Analysis
 Increase EF reproducibility and accuracy with automated one-click quantification of 3D TEE or TTE.

The products/features are not commercially available in all countries. Due to regulatory reasons their future availability cannot be guaranteed. Please contact your local Siemens organization for further details.

ACUSON SC2000, ACUSON P500, ACUSON S Family, ACUSON X700, eSie Measure, eSie Left Heart, eSie VVI, eSie Valves, eSie PISA, True Fidelity color Doppler, and eSie LVA are trademarks of Siemens Medical Solutions USA, Inc.

Siemens Healthineers Headquarters

Siemens Healthcare GmbH
Henkestr. 127
91052 Erlangen, Germany
Phone: +49 9131 84-0
siemens-healthineers.com

Legal Manufacturer

Siemens Medical Solutions USA, Inc.
Ultrasound
22010 S.E. 51st Street
Issaquah, WA 98029, USA
Phone: 1-888-826-9702
siemens-healthineers.com/ultrasound