



# ECO2

powerful and affordable B&W system



**CHISON**  
Value Beyond Imaging

# Advanced Imaging Technologies



## Ergonomics

- Rotatable LED (0~30°) : tailor to different viewing angles
- Ultra-compact & Ultra-light
- Easy to carry
- Keyboard : For easy and quick access
- Dedicated cart TR 9000
- Streamlined workflow

## ECHO

- Advanced technologies:
  - i-Image(Intelligent image optimization)
  - THI(Tissue Harmonic Image)
  - SRA(Speckle Reduction Algorithm)
  - Compound imaging
- Full digital beam-former
- Trapezoid
- Automatic PW trace
- Chroma
- Full screen display mode
- AIO(Automatic image optimization)

## Economic

- The latest platform & more advanced chip-set;brings you better image quality and features at less cost in a more compact box
- Support PC printer, reduce investment & day to day paper cost
- 8G memory card
- 320G haddisk (option)
- Vehicular Charging

## ECO-friendly

- Less radiation
- Less power consumption
- Longer usage life:LED
- Longer battery standby time:>2 hours

# Support PC Printer



ECO2



Traditional Ultrasound

Connect PC Printer



PC Printer

A4 Paper



Connect Video Printer



Video Printer

Thermal Paper



### Benefits

- PC printer is less expensive than video printer
- A4 paper saves more cost than thermal paper for everyday use
- Detail report can be printed (with images, measurement results, patient information)

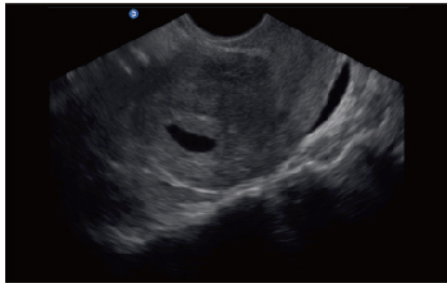
- More expensive
- Can ONLY print images



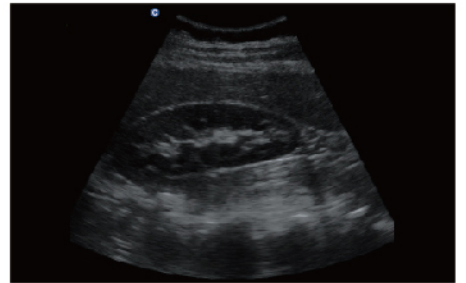
## Great image quality



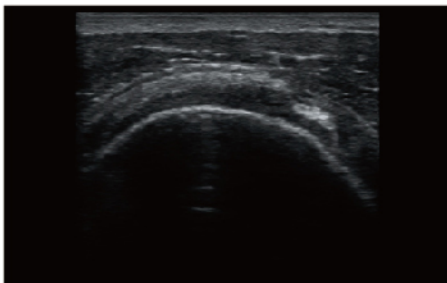
Median Sagittal Section,B Mode



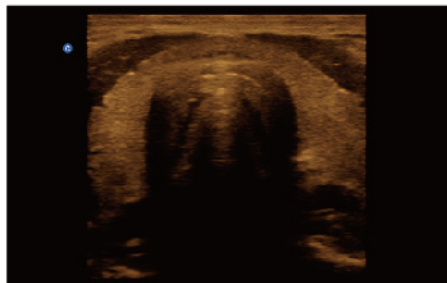
Early Pregnancy,B Mode



Kidney,B Mode



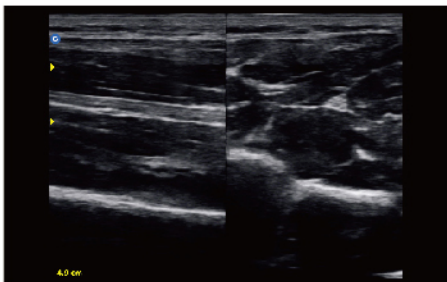
Subscapularis Tendon,B Mode



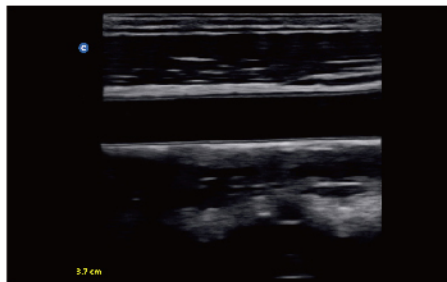
Thyroid,B Mode



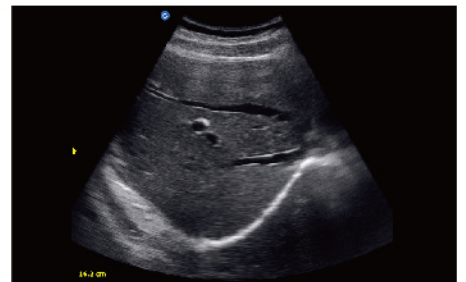
Gallbladder,B Mode



MSK,2B Mode



Carotid,B Mode



Liver,B Mode

# Specifications

Applications	Abdomen,OB/GYN,Vascular, Small parts(breast, testicles, thyroid),Musculoskeletal Conventional & Superficial, Pediatric, Basic Cardiac
Imaging technologies	i-Image,SRA,Compound,THI
Display Modes	B, B/B, 4B, M, B/M
Gray Scale	256 Levels
Scanning Depth	240mm Max (depend on the probe types)
Probe Frequency	2.5 MHz - 11.0 MHz (Depend on the probe)
Cine Loop	256 frames
Zoom	4 steps
Software Packages	Dedicated measurement package:General ,OB/GYN, URO , Cardiac,vascular,small parts
Archives Management	Patient information management, images record, exam report.
Power Supply	AC 100V-240V, 50Hz- 60Hz
Standard Configuration	2 probe connectors, 3 USB ports,VGA port ,Video port ,LAN port, Full Screen Display Mode,i-Image,Chroma ,SRA,Compound,THI, 8G memory card,Built-in Battery
Option	DICOM 3.0, Water-proof keyboard cover, Carrying Case (BG-100 ) , Cart TR 9000 ,Support PC Printer ,Video Printer



3.5MHz Convex  
C3-A



7.5MHz Linear  
L7M-A



9.0MHz Linear  
L7S-A



3.0MHz Micro-Convex  
MC3-A



7.5MHz Transrectal  
R7-A



6.0MHz Transvaginal  
V6-A



6.0MHz Micro-Convex  
MC6-A

## CHISON MEDICAL IMAGING CO., LTD.

### Sales & Service Contact Address:

No. 9 Xin Hui Huan Road, New District, Wuxi, Jiang Su Province, China214028

TEL: 0086-510-85310593 / 85310937 FAX: 0086-510-85310726 EMAIL: export@chison.com.cn



We reserve the right to make changes to this catalogue without prior notice.  
Please contact us or your local dealer for the latest information.  
\*Please refer to the user manual for details.

E-ECO2 160223