

CHISON
Value Beyond Imaging



SonoBook™ 6

Advanced Capabilities within Laptop Design

CHISON SonoBook 6

- Featured with compact laptop based design for easy mobility, provide solutions when fast reaction is needed.
- Combined with productive features, crisp imaging performance and intuitive workflow, SonoBook 6 could support excellent patient care, and offer economic clinical value.





SonoBook

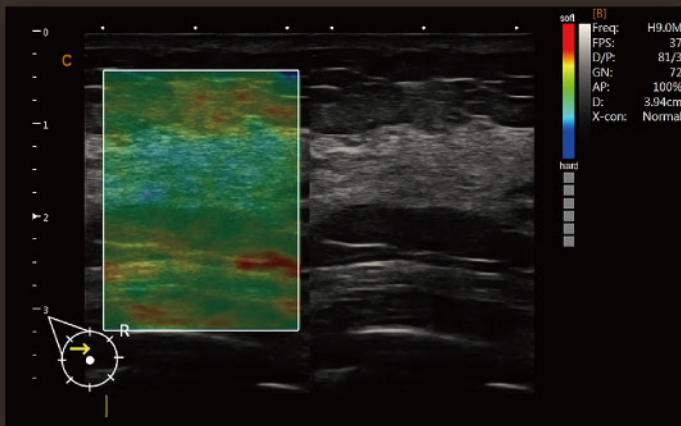
- ✓ 15" LED HD monitor, 120° rotatable.
- ✓ Truly portable design <12 lbs.
- ✓ Longer battery life up to 2 hours active mode, fast battery swap.
- ✓ Triple probe connector and precision cart. (Option)
- ✓ SonoDocking: DVI-I, Foot-Switch, Video-Out, remote, S-Video, for fast data transfer.

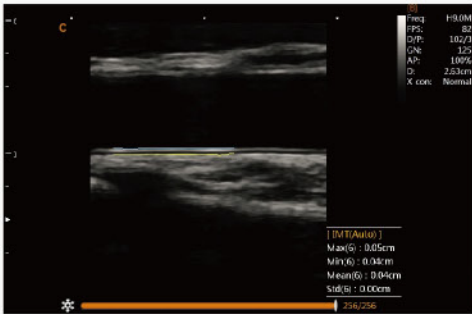


PRODUCTIVE FEATURES

Elastography

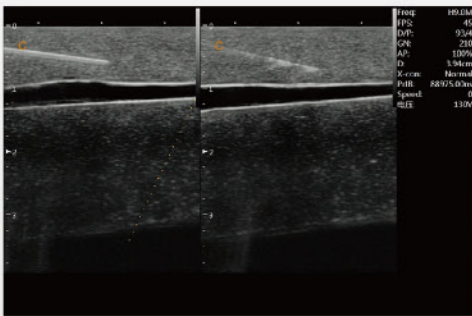
- Display the elasticity of different tissues in different color.
- Provide more clinical information, especially for breast tumor, thyroid, liver and prostate.
- Strain ratio measurement quantitatively gives the ratio between the average strain of the selected region and the nearby normal tissue region.





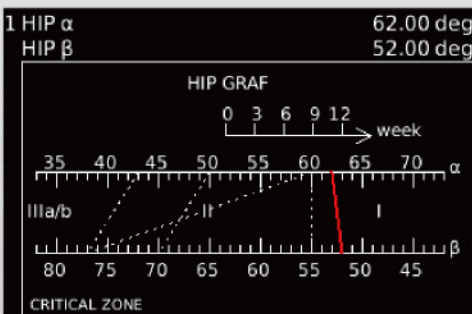
Auto IMT

- The automatic intima-media thickness measurement for fast carotid exam, providing the detailed result of the intima-media thickness, help to make the diagnosis automatically.



Super needle

- Enhance the needle displaying in image, without distortion of the needle.
- Decrease the complicated rate, increase the successful rate.

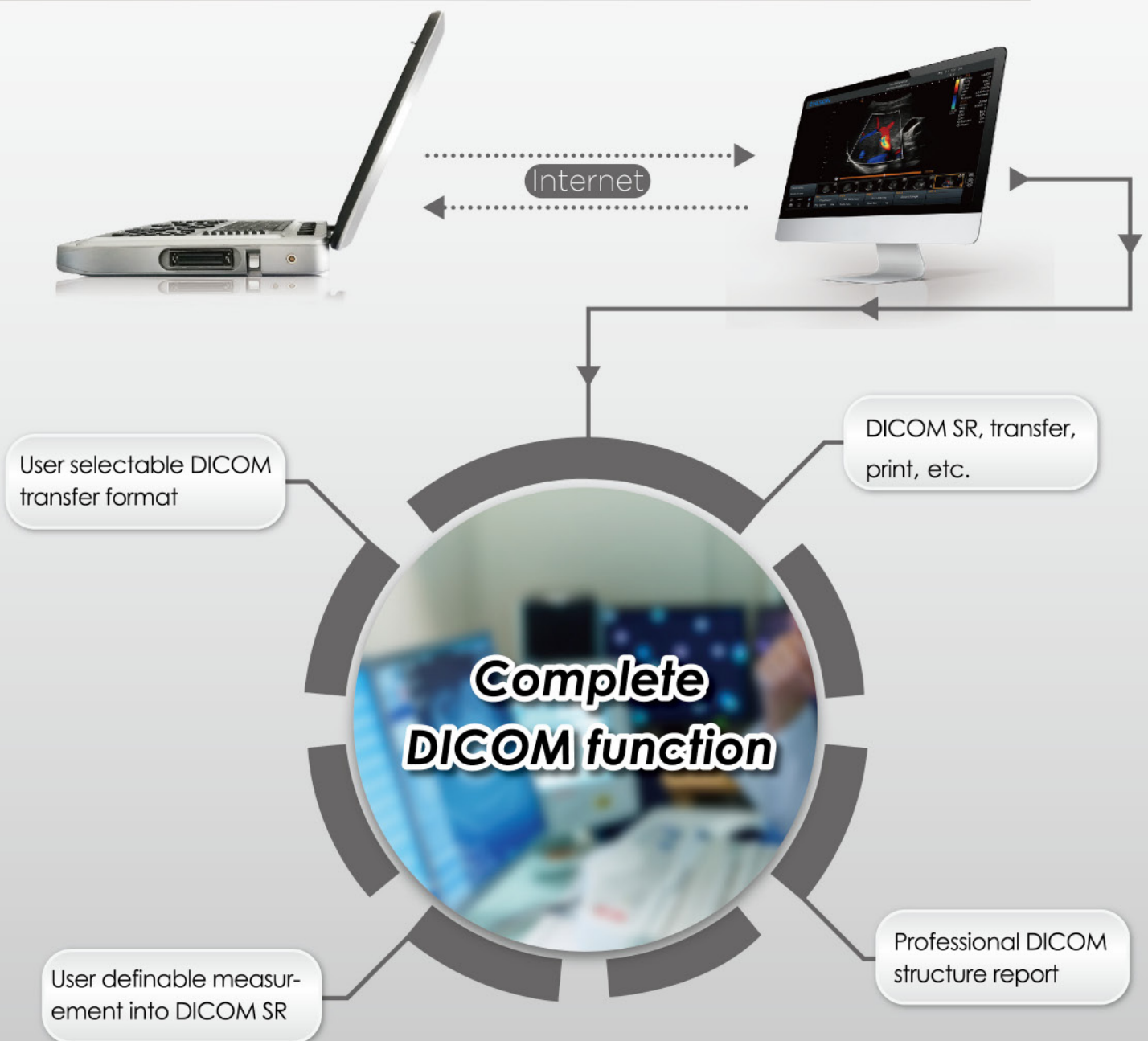


HIP graf

- Use a graph for hip orthotics diagnosis, help the doctor to give a easier and more accurate diagnosis during the pediatric hip scanning.
- Different angle indicate different level of hip deformity, which is easy and obvious to see with the aid of the graph. (I, II, D, IIIa, IIIb)

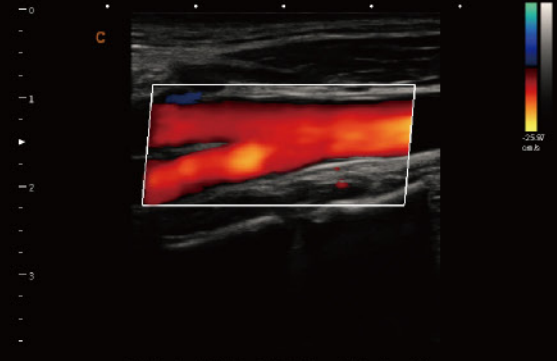
INTUITIVE WORKFLOW

Six-one-key Procedure
Anatomy-specific Presets
Efficient Data Management
User-friendly Interface
Shortcut key for quick access
Auto Measurements

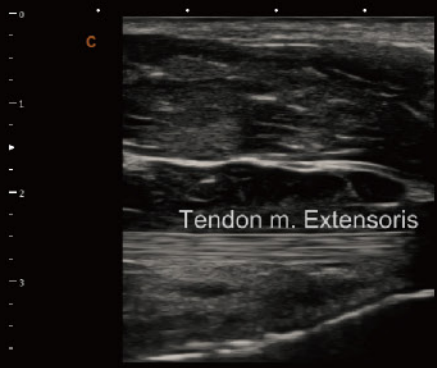




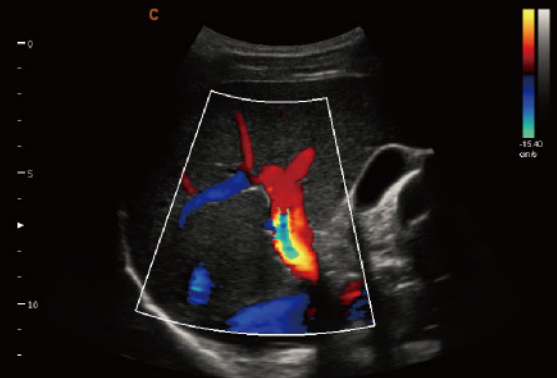
Shoulder, B Mode



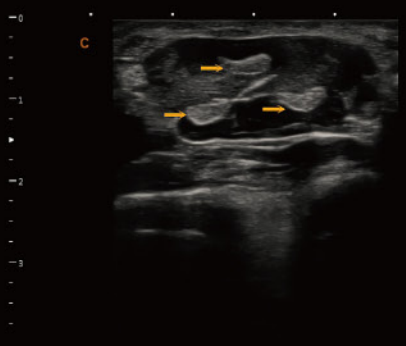
CCA, ECA&ICA, C Mode



Tendon m. Extensoris, B Mode



Portal Vein, C Mode



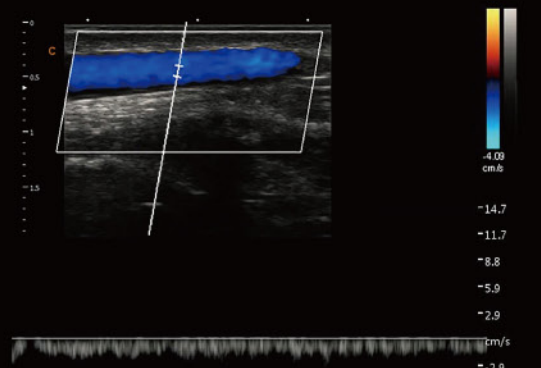
Wrist Tendon, B mode



Left Ventricle Long Aixs, B mode



Postcava, B mode



Basilica Vein, PW mode



2.0MHz-6.8MHz Convex
C3-V



4.0MHz-15.0MHz Linear
L7-V



7.0MHz-18.0MHz (With FHI) Linear
L12-V



5.0MHz-14.0MHz Linear
L8M5-V



1.5MHz-5.3MHz Phased array
P2-V



4.0MHz-12.0MHz Transvaginal
E6-V



4.0MHz-15.0MHz Transvaginal
E7W-V



4.0MHz-15.0MHz Trans-Rectal
R7-V



2.0MHz-6.8MHz Micro-Convex
MC3-V



4.0MHz-12.0MHz Micro-Convex
MC6-V

CHISON Medical Technologies Co., Ltd.

Sales & Service Contact Address:

No.9, Xinhuihuan Road, Xinwu District, Wuxi, Jiangsu, China 214028

TEL : 0086-510-85310593 / 85310937

FAX : 0086-510-85310726

EMAIL : export@chison.com.cn