

NEW

# ECO 5

Ultra-Portable, Ultra-Affordable, Color doppler



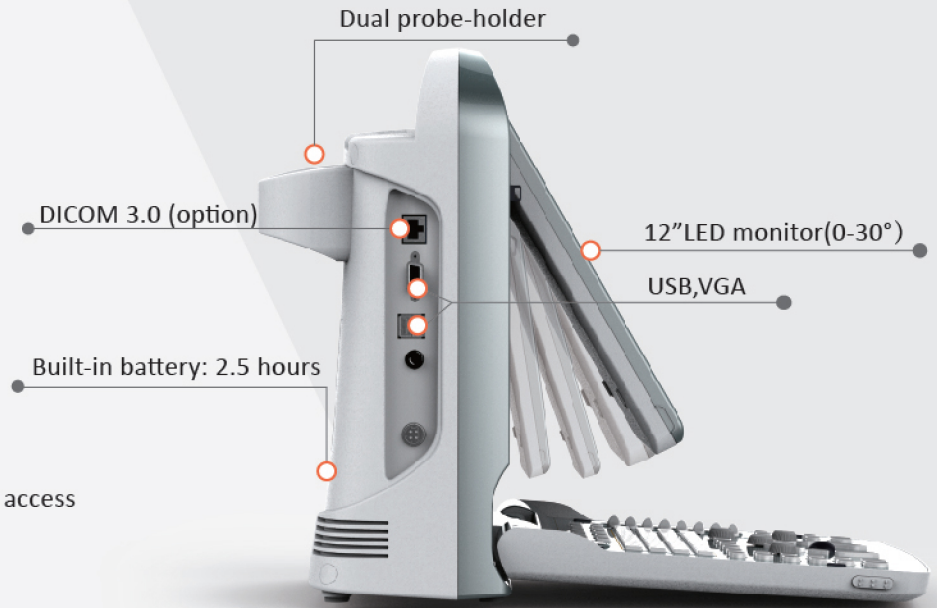
**CHISON**  
Value Beyond Imaging

## Eco-friendly

- Less radiation
- Lower power consumption
- Longer life: LED

## Ergonomic

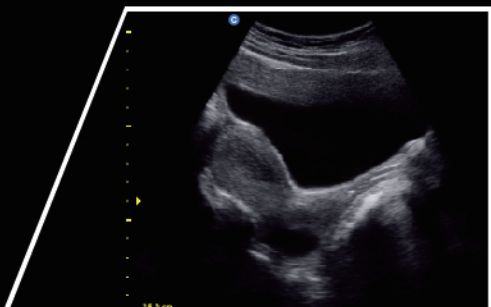
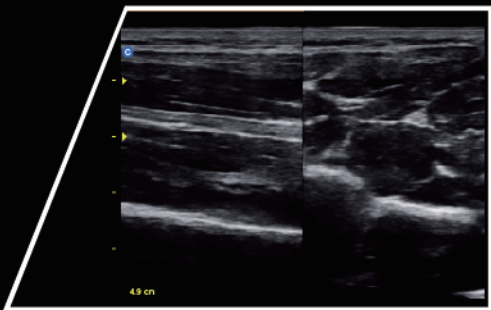
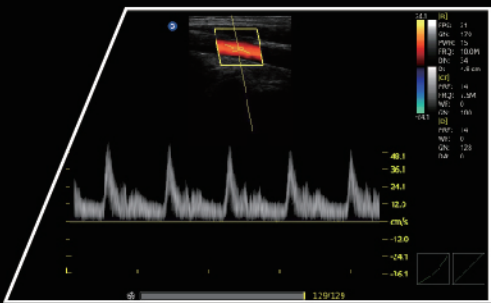
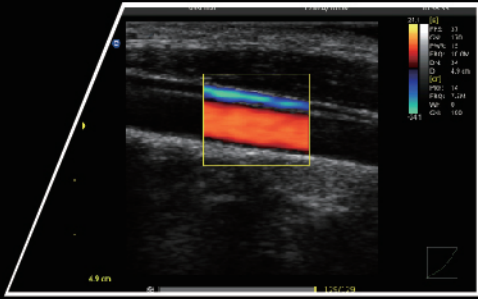
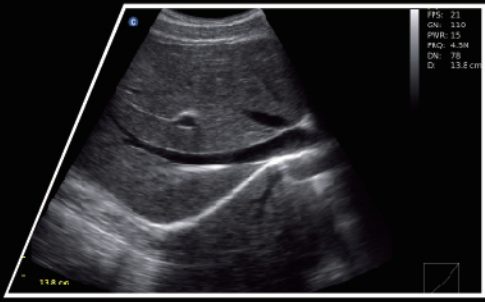
- Rotatable LED monitor (0~30°): tailor to different viewing angles
- Unique LED: reduce eye fatigue
- Keyboard design: for easy and quick access
- Full screen display mode



## Excellent

- Full digital beam-former
- Color doppler technology
  - Double frame rate technology
  - Color priority
  - Color filter
- Applications
  - Abdomen, OB&GYN, Urology, Vascular,
  - Small Parts, Pediatrics, MSK, Basic Cardiology
- Display modes: B, B/B, 4B, M, B/M, CFM, PW, Trapezoidal
- Advanced technologies: i-Image, THI, SRA, Compound imaging
- 16G memory card
- 320G harddisk (option)
- streamlined workflow





### • Streamlined Workflow

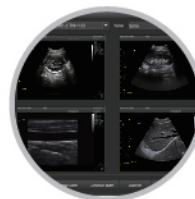
The multi-purpose user presets, comprehensive measurement & report system, built-in EasyView™ image archive system, quick image storage / retrieve / transfer, one-button direct print, make the complete workflow better than what you can dream of.



Various Measurements



Detailed Reports



EasyView™ Image Archive System

### • ONE KEY



### • Support PC Printer (HP1102&M251n)



2.5MHz-5.0MHz Convex  
C3-A



5.3MHz-10.0MHz Linear  
L7M-A



5.3MHz-11.0MHz Linear  
L7S-A



2.5MHz-5.0MHz Micro-Convex  
MC3-A



4.5MHz-8.0MHz Transvaginal  
V6-A



4.5MHz-8.0MHz Micro-Convex  
MC6-A



5.0MHz-10.0MHz Transrectal  
R7-A

## CHISON MEDICAL IMAGING CO., LTD.

No. 9 Xin Hui Huan Road, New District, Wuxi, Jiang Su Province, China214028  
TEL: 0086-510-85310593 / 85310937 FAX: 0086-510-85310726 EMAIL: export@chison.com.cn



We reserve the right to make changes to this catalogue without prior notice.  
Please contact us or your local dealer for the latest information.  
\* Please refer to the user manual for details