

WWW.CHISON.COM



# ECO6

More Advanced **More** Powerful

**CHISON**

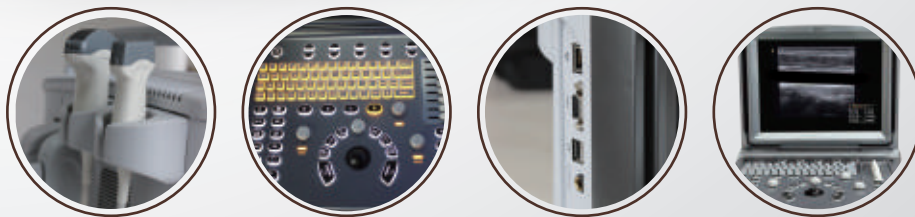
Value Beyond Imaging

# *More advanced* *More Powerful*

As a new member of ECO family. ECO6, has considered the most frequent request of users, adding more advanced features and capabilities inside this ultra-compact body, to provide better patient care.



# Easy to operate    Easy to go



**ONE KEY** to selected the desired application with automatic preset



**ONE KEY** to optimize the image automaticly.



**ONE KEY** to save still image and CINE loop



**ONE KEY** to measure



**ONE KEY** to make report



**ONE KEY** to print to PC or video printer (see page 4 option)

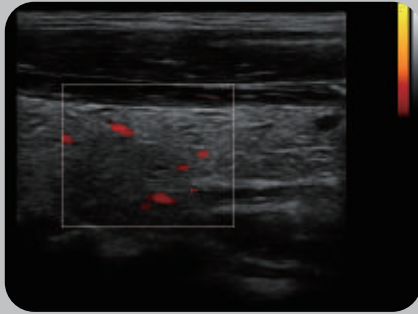


# More Powerful

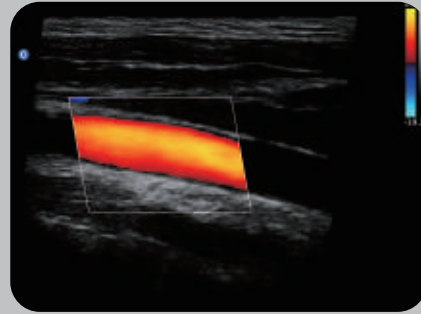
- ✓ *Abdomen, OB/GYN, Urology, cardiac*
- ✓ *Phased array probe*
- ✓ *B steer, super needle*
- ✓ *triplex, Auto IMT, Automatic pw trace, PD,DPD*



ECO6



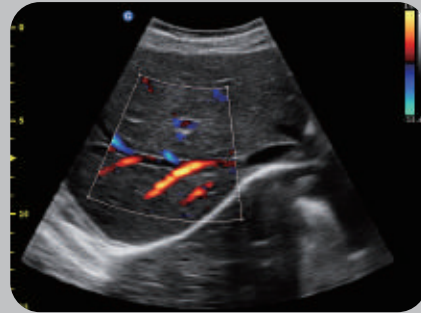
Thyroid,PD Mode



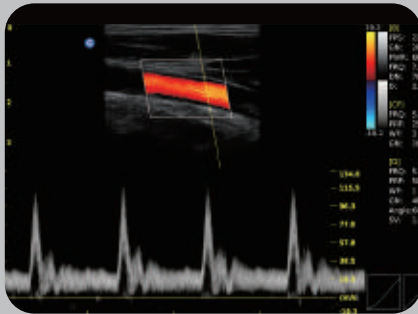
Carotid,B steer



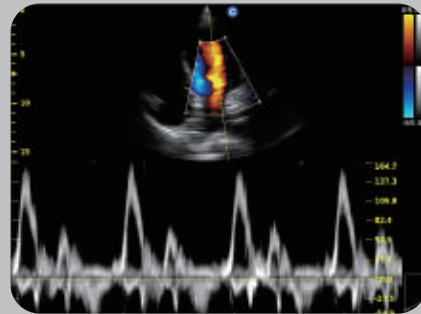
Liver,B Mode



Liver,Color Mode



Carotid,Triplex



Cardiac,PW Mode



2.5MHz-5.0MHz Convex  
C3-A



5.3MHz-10.0MHz Linear  
L7M-A



5.3MHz-11.0MHz Micro-Convex  
L7S-A



4.5MHz-8.0MHz Transvaginal  
V6-A



5.0MHz-10.0MHz Linear Rectal  
R7-A



2.5MHz-4.5MHz Phased Array  
P3-A



2.5MHz-5.0MHz Micro-Convex  
MC3-A



4.5MHz-8.0MHz Micro-Convex  
MC6-A

## CHISON MEDICAL IMAGING CO., LTD.

### Sales & Service Contact Address:

No. 9 Xin Hui Huan Road, New District, Wuxi, Jiang Su Province, China214028

TEL : 0086-510-85310593 / 85310937

FAX : 0086-510-85310726

EMAIL : export@chison.com.cn